

# Lastolite

---

## Professional

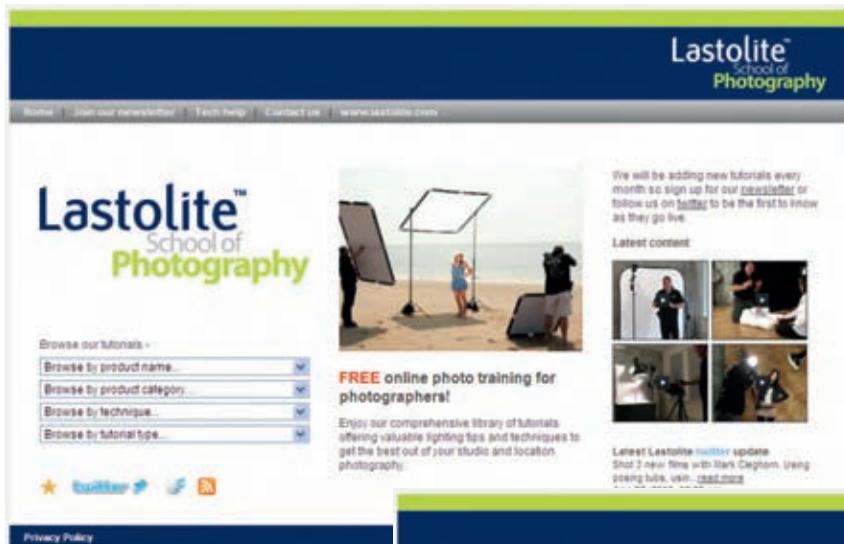


Backgrounds and Lighting Control Systems

[www.lastolite.com](http://www.lastolite.com)

# Lastolite™ School of Photography

Visit [www.lastoliteschoolofphotography.com](http://www.lastoliteschoolofphotography.com) to view our video tutorials, which show how professional photographers use our products.



Like us on Facebook at  
[www.facebook.com/lastoliteprofessional](http://www.facebook.com/lastoliteprofessional)



Follow us on Twitter at  
[www.twitter.com/lastolite](http://www.twitter.com/lastolite)

# Lastolite

## Professional



## Index

TriGrip	p3	Off Camera Cords / Sync Block <b>NEW</b>	p37
TriGrip Difflector <b>NEW</b>	p4	Elinchrom Quadra Accessories	p38
TriGrip Bracket / TriFlip 8:1 Deluxe Kit	p5	Joe McNally Intro / Joe McNally TriGrip	p39
TriFlips 8:1 / TriFlips 7:1 / TriFlips 6:1 <b>NEW</b>	p6	Joe McNally Ezybox / Joe McNally TriFlash	p40
Collapsible Reflectors	p7	Joe McNally Skylite / Joe McNally UpLite	p41
Bottletops 5:1 / Collapsible Reflectors Accessories	p8	Brolly Grip	p42
Triflector MkII	p9	8:1 Umbrella	p43
Skylite Rapid <b>NEW</b>	p10	Umbrellas - Reversible / Dual Duty	p44
EzyBalance / XpoBalance / TriBalance	p12	Umbrellas - Dual / All in One	p45
Lumen8 <b>NEW</b>	p14	Umbrellas - Essentials / Mega Umbrellas	p46
Lumen8 Kits <b>NEW</b>	p15	Umbrella Box / Umbrella Kits	p47
MegaLite	p16	Cubelite®	p48
KickerLite / Ezyview	p17	Cubelite® Kits	p49
RayD8 c3200 / RayD8 c5600	p18	Studio Cubelite®	p50
Ezybox Hotshoe	p19	LiteTable / ePhotomaker	p51
Ezybox Hotshoe Accessories / Ezybox Hotshoe Kits	p20	Dyed Background Swatches	p52
Creative Diffusers and Mask Strips / Triflector Speed-Lite	p21	Dyed Knitted Ezycare Backgrounds	p53
Strobo	p22	Dyed Collapsible Reversible Backgrounds	p54
Strobo Kit - Ezybox Hotshoe Plate / Strobo Kit - Direct to Flashgun	p23	Urban Collapsible Backgrounds <b>NEW</b>	p55
Strobo Gobo / Strobo Collapsible Snoot <b>NEW</b>	p24	Plain Collapsible Backgrounds <b>NEW</b>	p56
Strobo Accessories <b>NEW</b>	p25	Plain Knitted Ezycare Backgrounds	p57
Hotrod Octa Softbox <b>NEW</b>	p26	HiLite Backgrounds	p58
Hotrod Strip Softbox <b>NEW</b>	p27	HiLite Bottletops	p59
Ezybox Speed-Lite	p28	Panoramic Background <b>NEW</b>	p60
Micro Apollo MkII / Hotshoe Tiltheads	p29	Superwhite Vinyl Backgrounds / Coloured Vinyl Backgrounds <b>NEW</b>	p61
Ezybox II <b>NEW</b>	p30	Paper Roll Backgrounds	p62
Ezybox II - Square <b>NEW</b>	p31	Solo Background Support <b>NEW</b>	p63
Ezybox II - Octa <b>NEW</b>	p32	Background Supports	p64
Ezybox II - Switch <b>NEW</b>	p33	Stands / Brackets and Extending Handles	p65
Ezybox II Configuration Chart	p34	Posing Tubs / Low Level Posing Tubs / Posing Tub Covers <b>NEW</b>	P66
TriFlash Shoe Lock / TriFlash Sync	p35	Baby Poser / Baby Posing Coat	p67
Ezybox II Quad <b>NEW</b>	p36	ChromaKey Collapsible Reversibles / Curtain	p68



Some of the products featured in this brochure may not be available in your country. Product codes may also differ. Please check availability and product codes with your local distributor.

The specifications shown on this leaflet are based upon the latest information at the time of printing. In line with our policy of continual product development Lastolite Limited reserve the right to make changes at any time, without notice, to specifications and models, and to discontinue items.



## About Lastolite

Lastolite was founded in 1985 and has developed from a company that manufactured the original reflecting panel into a company that now offers a very extensive portfolio of market leading products. To maintain our leading edge we make significant investments into research and development. This ensures that we can continue to launch new innovative products to meet the needs of the ever changing photo and video markets. This brochure features more new products than ever before. There are a number of developments and additions to our existing portfolio as well as some major new concept products.

Our strict quality standards enable us to deliver a world class product manufactured to the highest quality, ensuring it can withstand the repeated daily use of the most demanding user. This attention to detail and our commitment to deliver ground breaking products to the photo and video markets has led to the Lastolite brand being sold in more than 60 countries worldwide.

Our research and development team are continually looking at ways to further improve the way our products are manufactured. An example of this would be the rim tape we use on many of our products. It is now even stronger making the products using this tape even more durable. We have also introduced a triple stitch line on most of our products as opposed to using just one. This again adds strength and ensures the product will last for many years. Our reflective fabrics also continue to be developed to the highest specification - not only for their reflective properties but also their construction which prevents cracking of the film and potential delamination. Finally, to support these product improvements we have also developed a much more durable fabric for all the carry cases our products are supplied in. A high grade zip and multiple stitch lines construction ensure they will last as long as our products.

### The Vitec Group

Capture the moment™

For over 100 years through every innovation in photography, film and digital image-making, Vitec businesses have developed a powerful portfolio of brand and products that have enabled some of the most amazing moments to be captured under some of the most challenging conditions.

Vitec is an international Group principally serving customers in the broadcast, photographic and military, aerospace and government (MAG) markets. Vitec is based on strong well-known premium brands on which its customers worldwide rely. Vitec is organised in three divisions Videocom, Imaging and Services.

Videocom designs and distributes systems and products used in broadcasting and live entertainment, film and video production and MAG.

Imaging designs, manufactures and distributes equipment and accessories for photography and video.

Services provides equipment rental, workflow design and technical support for camera, video, audio, fiber optic and wireless technology used by TV production and film crews.

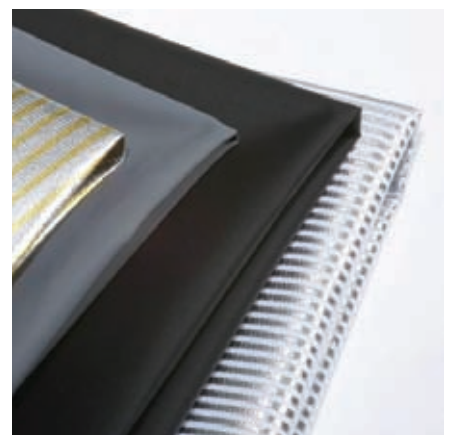
More information can be found on the Group's website: [www.vitecgroup.com](http://www.vitecgroup.com)



Three stitch lines



Two stitch line plus an upgraded zip



High performance fabrics





# Lighting Control

## TriGrip

The TriGrip reflectors utilise a triangular design which provides a much stronger and stable structure. They also feature a moulded handle with securing strap, allowing even more accurate positioning of the reflector with just one hand, which means that light can be directed to all those awkward spots e.g. under the chin and eyes without the need for stands or supports. The securing straps also allow you to support the reflector without actually gripping the handle, reducing the pressure on your wrist and fingers when held for prolonged periods.



Close up without TriGrip



Close up with TriGrip

TriGrip designed by Gary Astill. A registered design.

### Features

- ▶ Hold the reflector with just one hand
- ▶ Hold 2 reflectors, one in each hand
- ▶ New moulded handle with strap
- ▶ Double sided
- ▶ Collapses to a third of its original size

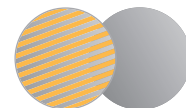
Silver / White



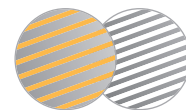
Gold / White



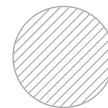
Sunfire / Silver



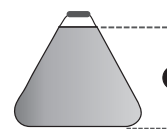
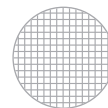
Sunlite / Soft Silver



Diffuser 1 Stop



Diffuser 2 Stops



### Specifications

TriGrip Mini	A	Code	TriGrip	A	Code	TriGrip Large	A	Code
Silver / White	45cm (18")	LL LR3531	Silver / White	75cm (30")	LL LR3631	Silver / White	1.2m (48")	LL LR3731
Gold / White	45cm (18")	LL LR3541	Gold / White	75cm (30")	LL LR3641	Gold / White	1.2m (48")	LL LR3741
Sunfire / Silver	45cm (18")	LL LR3536	Sunfire / Silver	75cm (30")	LL LR3636	Sunfire / Silver	1.2m (48")	LL LR3736
Sunlite / SoftSilver	45cm (18")	LL LR3528	Sunlite / SoftSilver	75cm (30")	LL LR3628	Sunlite / SoftSilver	1.2m (48")	LL LR3728
Diffuser, 1 Stop	45cm (18")	LL LR3551	Diffuser, 1 Stop	75cm (30")	LL LR3651	Diffuser, 1 Stop	1.2m (48")	LL LR3751
Diffuser, 2 Stops	45cm (18")	LL LR3507	Diffuser, 2 Stops	75cm (30")	LL LR3607	Diffuser, 2 Stops	1.2m (48")	LL LR3707
Collapses to 20cm (8")			Collapses to 30cm (12")			Collapses to 51cm (20")		

## Lighting Control

### TriGrip Difflector PATENT PENDING

The TriGrip Difflector is the world's first dual purpose reflector panel which can be used as a diffuser (2.3 stops) and a bounce reflector. The unique fabric developed for this product allows light to pass through one side and bounce off the other side, making it a truly versatile product whatever the lighting conditions. The difflector is available in two versions; one with a Soft Silver reflective surface and the other with a Soft Gold surface.

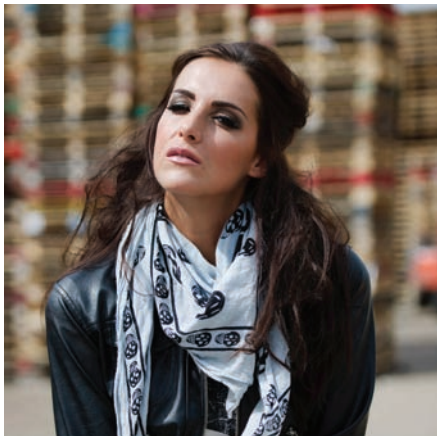
The TriGrip Difflector also features the unique TriGrip moulded handle for accurate positioning of the reflector with just one hand.

#### Features

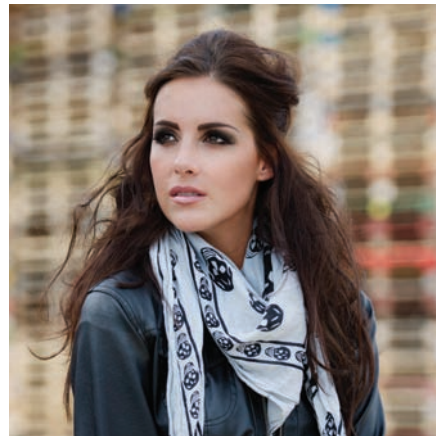
- ▶ Hold the reflector with just one hand
- ▶ Hold two reflectors one in each hand
- ▶ Use as a diffuser or a bounce reflector
- ▶ Collapses to a third of its original size

#### Specifications

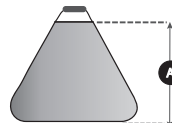
TriGrip Difflector	A	Code
TriGrip Difflector Soft Silver mini	45cm (18")	LL LR3552
TriGrip Difflector Soft Silver	75cm (30")	LL LR3652
TriGrip Difflector Soft Silver large	1.2m (48")	LL LR3752
TriGrip Difflector Soft Gold mini	45cm (18")	LL LR3553
TriGrip Difflector Soft Gold	75cm (30")	LL LR3653
TriGrip Difflector Soft Gold large	1.2m (48")	LL LR3753



Without TriGrip Difflector



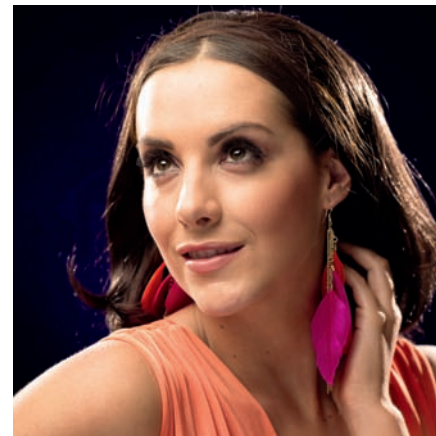
With Soft Silver diffuser only



With Soft Silver diffuser and reflector

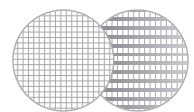


Without TriGrip Difflector

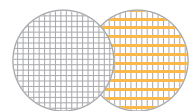


With Soft Gold Difflector

Diffuser 2.3 Stop / Soft Silver



Diffuser 2.3 Stop / Soft Gold





## TriGrip Bracket

The TriGrip bracket is ideal for photographers who work alone and want to support the TriGrip reflector on one of our extending handles, a lighting stand, tripod or any other type of fixing bracket (a spigot connector may be required). Simply place the moulded TriGrip handle into the bracket and secure it in place with the strap. The ball joint connector enables you to then position the TriGrip exactly where you want leaving your hands free to operate the camera.

The bracket can be used to support the TriGrip when working with ambient light or in conjunction with battery operated flash using the flash gun attachment arm to bounce light off the reflectors surface or shoot through a diffusing panel.



### Features

- ▶ Ideal for photographers who work alone
- ▶ Compact foldaway design
- ▶ Can be used with battery operated flash guns
- ▶ Multi position ball joint connector

### Specifications

TriGrip Bracket	Code
TriGrip Bracket*	LL LA2430

\* Not recommended for use with the large TriGrip.



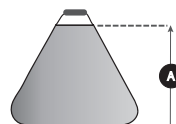
## TriFlip 8:1 Deluxe Kit

The TriFlip 8:1 Deluxe Kit provides a complete all in one solution for the busy photographer. The kit comprises: 1 x 75cm (30") TriGrip 2 stop diffuser, 1 x set of 75cm (30") TriFlip covers containing white, silver, softsilver, gold, sunlite and sunfire reflective surfaces as well as a black surface, 1 x air cushioned lighting stand (85cm - 312cm high), 1 x TriGrip Bracket and 1 x carry case with shoulder strap.



### Specifications

TriFlip 8:1 Deluxe Kit	A	Code
TriFlip 8:1 Deluxe Kit	75cm (30")	LL LR3699





## Lighting Control

### TriFlips 8:1

Never get caught out again, up to 8 surfaces in the same bag. The TriFlips are designed to increase the versatility of the TriGrip reflector. Simply insert the TriGrip into the TriFlip sleeve for instant access. TriFlip surfaces: Silver, White, Soft Silver, Gold, Sunfire, Sunlite and Black.



For illustrative purposes only to show different surfaces. TriFlips contain only two sleeves.



#### Features

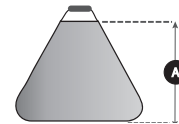
- ▶ Contains TriFlip sleeves which are double sided and reversible, providing 7 different coloured surfaces
- ▶ Set up in seconds
- ▶ Taut professional finish

#### Specifications

TriFlip 8:1	A	Code
TriFlip 8:1 Kit	75cm (30")	LL LR3696
TriFlip 8:1 Mini Kit	45cm (18")	LL LR3596

Kits contain:

- 1x TriGrip 2 Stop diffuser
- 2x Double sided, reversible TriFlip covers:
  - Silver/Softsilver, Sunlite/Sunfire
  - Gold/Black, White/Black



### TriFlips 7:1



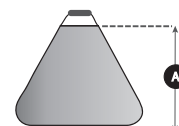
Double sided reversible TriFlip cover

#### Specifications

TriFlip 7:1	A	Code
TriFlip 7:1 Kit	75cm (30")	LL LR3695

Kit contains:

- 1x 75cm (30") TriGrip 2 Stop diffuser
- 1x 75cm (30") TriGrip Gold/White
- 1x Double sided, reversible TriFlip cover:
  - Sunlite/Sunfire, Silver/Softsilver



### TriFlips 6:1

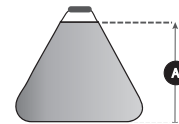


#### Specifications

TriFlip 6:1	A	Code
TriFlip 6:1 Kit	75cm (30")	LL LR3694

Kit contains:

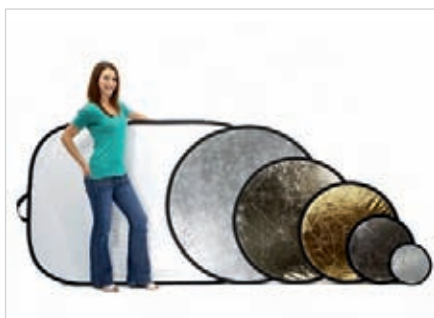
- 1x 75cm (30") TriGrip Gold/White
- 1x Double sided, reversible TriFlip cover
  - Sunlite/Sunfire, Silver/Softsilver



# Collapsible Reflectors

The original and industry leading collapsible reflectors.

As well as the lifetime guarantee on reflector steel, we have also upgraded the rim tape on all reflectors to make them even more durable.



**White**  
5600°K

**Soft Silver**  
5600°K

**Silver**  
5600°K

**Sunlite**  
5000°K

**Sunfire**  
4750°K

**Gold**  
3800°K

## Specifications

### Collapsible Reflectors

Open Sizes	30cm (12")	50cm (20")	76cm (30")	95cm (38")	120cm (48")	1.8 x 1.2m (6' x 4')
Collapsed Sizes	14cm (5.5")	24cm (9")	30cm (12")	40cm (16")	48cm (19")	64cm (25")
	CODE	CODE	CODE	CODE	CODE	CODE
Sunfire / White	LL LR1206	LL LR2006	LL LR3006	LL LR3806	LL LR4806	LL LR7206
Silver / White	LL LR1231	LL LR2031	LL LR3031	LL LR3831	LL LR4831	LL LR7231
Silver / Gold	LL LR1234	LL LR2034	LL LR3034	LL LR3834	LL LR4834	LL LR7234
Sunfire / Silver	LL LR1236	LL LR2036	LL LR3036	LL LR3836	LL LR4836	LL LR7236
Gold / White	LL LR1241	LL LR2041	LL LR3041	LL LR3841	LL LR4841	LL LR7241
Sunlite / Soft Silver	LL LR1228	LL LR2028	LL LR3028	LL LR3828	LL LR4828	LL LR7228
Diffuser, 2 Stops	-	LL LR2007	LL LR3007	LL LR3807	LL LR4807	LL LR7207

### Reflector Kit

Reflector Kit 76cm (30") silver/gold and white reflectors

Code

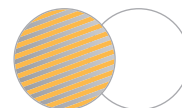
LL LR1505

## Features

- ▶ Collapsible / Reversible
- ▶ Lifetime rim guarantee
- ▶ Upgraded rim tape
- ▶ Six useful sizes and six essential colours
- ▶ Double-coated reflective surfaces
- ▶ Collapses to a third of its original size



Sunfire / White



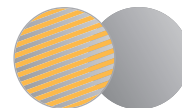
Silver / White



Silver / Gold



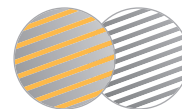
Sunfire / Silver



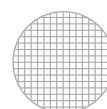
Gold / White



Sunlite / Soft Silver



Diffuser, 2 Stops



### Bottletops 5:1

An innovation of Lastolite's industry leading range of reflectors.

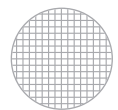
Simply slip the elasticated Gold / White or Sunfire / Silver cover over the reflector or diffuser to produce an instant change of colour.



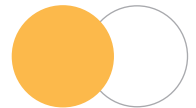
#### Features

- ▶ Sets up in seconds
- ▶ No extra weight
- ▶ Collapses to a third of its original size
- ▶ Five surfaces in one bag
- ▶ Taut professional finish

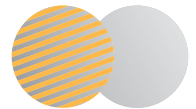
Diffuser Panel



Gold / White Cover



Sunfire / Silver Cover



#### Specifications

Bottletop Accessories	Size	Code
Diffuser with Gold / White & Sunfire / Silver cover	50cm (20")	LL LR2096
Diffuser with Gold / White & Sunfire / Silver cover	75cm (30")	LL LR3096
Diffuser with Gold / White & Sunfire / Silver cover	95cm (38")	LL LR3896
Diffuser with Gold / White & Sunfire / Silver cover	120cm (48")	LL LR4896

### Collapsible Reflector Accessories

Suitable for all reflectors and bottle tops, the following accessories allow for versatile positioning:



LL LA1100 Universal Bracket



LL LA1104 Diffuser Bracket



LL LA1113 Reflector Bracket



LL LA1107 Panelite Bracket

#### Features

- ▶ Wind resistant clips for outdoor use
- ▶ LL LA1113 clamps to tripod legs and tables
- ▶ LL LA1107, LL LA1100 & LL LA1104 all adjustable in size

#### Specifications

Reflector Accessories	Size	Code
Universal Bracket	50cm - 120cm (20" - 48")	LL LA1100
Flexible Reflector Bracket	30cm (12")	LL LA1113
Diffuser Holder Bracket	50cm - 120cm (20" - 48")	LL LA1104
Panelite Bracket	95cm - 180cm (38" - 72")	LL LA1107



# Triflector MkII

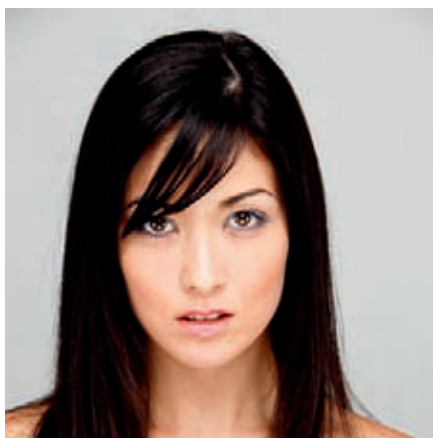
The Triflector is widely used in makeovers and fashion shots because the subject is given the Triflector's distinctive 'catch lights' to the eyes. The hinge mechanisms make all three panels individually adjustable to get light exactly where you need it. The panels each fold like our collapsible reflecting panels; the frame folds away and they all fit into a portable bag. Triflector MkII weighs only 1.2kg.



Using with Ezybox Studio Softbox



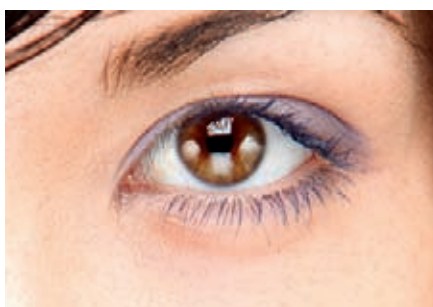
Without Triflector



With Triflector



Using with Beautydish



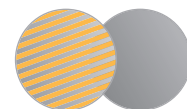
## Features

- ▶ Unique quality of light
- ▶ Weighs just over 1kg

## Specifications

Triflector MkII	Code
Triflector Mk II - Sunfire/Silver*	LL LR2933
Triflector Mk II - Silver/ White*	LL LR2933SW
Triflector MkII Panels	Code
Set of three Gold / White reflector panels	LL LR2905
Set of three Translucent reflector panels	LL LR2909
Set of three Silver / White reflector panels	LL LR2903
Triflector MkII Kit	Code
TriFlector MkII with Sunfire / Silver panels & stand kit**	LL LR2933SP

Sunfire / Silver



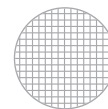
Silver / White



Gold / White



Translucent Fabric reduces light by 1.2 stop



\* Includes adjustable framework and 3 x reflector panels

\*\* Includes adjustable framework, 3 x reflector panels and stand (LL LS1158 - see page 65)

## Lighting Control

### Skylite Rapid

For the location photographer who needs lighting control in the most demanding situations. The Skylite Rapid's collapsible but rigid aluminium frame delivers reliable performance even in windy conditions, while the Skylite Rapid change covers simply clip in place to provide maximum versatility.

The Skylite Rapid frames, fabrics and accessories are all available separately, so you can mix and match as you choose.

For greater value choose our Standard Kit. The Standard kit contains a Silver/White reflector, 1.25 stops diffuser, frame and bag.

Note: All Skylite frames are compatible with the original Skylite covers and Skylite Rapid covers.

#### Features

- ▶ Aluminium frame
- ▶ Resistant to rust so ideal for outdoors
- ▶ There is an elastic cord running through the aluminium, so it's impossible to lose parts or leave anything behind
- ▶ Skylite Rapid change covers clip easily into place for an impressively taut finish
- ▶ One bag fits all sizes



Gold / Silver



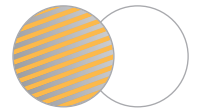
Silver / White



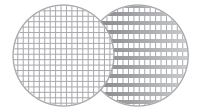
Black / White / 5600°K



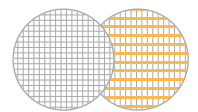
Sunfire / White 4750°K / 5600°K



Difflector 2.3 Stop / Soft Silver



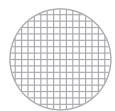
Difflector 2.3 Stop / Soft Gold



Diffuser 0.75 Stop



Diffuser 1.25 Stop



Black Velvet







### Specifications

Skylite Rapid Frames	Code
Skylite Rapid Frame Small (1.3kg) 1.1m x 1.1m (3'6" x 3'6")	LL LR811
Skylite Rapid Frame Medium (2kg) 1.1m x 2m (3'6" x 6'6")	LL LR812
Skylite Rapid Frame Large (2.3kg) 2m x 2m (6'6" x 6'6")	LL LR822
Skylite Rapid Accessories	Code
Skylite Rapid Bag	LL LA8444
Skylite Rapid Griphead	LL LA8446
Skylite Rapid Floor Bracket (does not include Griphead)	LL LA8447
Skylite Rapid Crossbar Handle	LL LA8449



Clip on covers for rapid assembly



Skylite's special griphead allows it to be fixed to stands and tilted as required. (LL LA8446)



Skylite's floor bar (LL LA8447) enables the system to stand alone (particularly handy for solo shoots). Must be used with a griphead (LL LA8446)

### Specifications

Skylite Rapid Kits	Silver/White Reflector	1.25 Stops Diffuser	Frame	Bag	Code
Skylite Rapid Small kit	1	1	1	1	LL LR81143R
Skylite Rapid Medium kit	1	1	1	1	LL LR81243R
Skylite Rapid Large kit	1	1	1	1	LL LR82243R

### Skylite Rapid Fabrics

	Small Fabrics 1.1m x 1.1m (3'6" x 3'6")	Medium Fabrics 1.1m x 2m (3'6" x 6'6")	Large Fabrics 2m x 2m (6'6" x 6'6")
	Code	Code	Code
Black / White	LL LR81121R	LL LR81221R	LL LR82221R
Sunfire / White	LL LR81106R	LL LR81206R	LL LR82206R
Silver / White	LL LR81131R	LL LR81231R	LL LR82231R
Gold / Silver	LL LR81134R	LL LR81234R	LL LR82234R
1.25 Stop Diffuser	LL LR81107R	LL LR81207R	LL LR82207R
0.75 Stop Diffuser	LL LR81101R	LL LR81201R	LL LR82201R
Black Velvet	LL LR81102R	LL LR81202R	LL LR82202R
Soft Silver Difflector	LL LR81108R	LL LR81208R	LL LR82208R
Soft Gold Difflector	LL LR81109R	LL LR81209R	LL LR82209R



## Colour Balance and Exposure Control

### EzyBalance PATENTED

The EzyBalance 18% is a handy double sided 'pop up' grey/white card which simplifies the complex technical issues surrounding exposure and colour correction when working in different lighting conditions.

A unique focusing target enables the camera to focus on the card and take the necessary readings. A waterproof version is also available for scuba divers.

The EzyBalance 12% card is based on the same mid tone concept however, it features a slightly lower reflective value than the 18% version, and is more in tune with some manufacturers products.



EzyBalance 18%



EzyBalance 12% (Patent Pending)

#### Features

- ▶ Colour correction, pre and post capture
- ▶ Exposure control, pre and post capture
- ▶ Accurate colour rendition
- ▶ Collapsible, durable and cleanable
- ▶ Double sided
- ▶ Unique focusing target
- ▶ For use with digital or film photography
- ▶ Collapses to a third of its original size



EzyBalance 18% (divers version)

### XpoBalance PATENTED

The XpoBalance works in a similar way to the EzyBalance but has the added advantage of three different grey surfaces on one side and a black, white and 18% grey surface on the other side, collectively offering a range of white balance, exposure, colour correction and bracketing adjustment options.



XpoBalance



#### Specifications

EzyBalance	Code
30cm (12") 18%	LL LR1250
50cm (20") 18%	LL LR2050
75cm (30") 18%	LL LR3050
30cm (12") 12%	LL LR1254
EzyBalance for Scuba Divers	
30cm (12") 18%	LL LR1252
XpoBalance	
38cm (15")	LL LR1558
TriBalance	
75cm (30")	LL LR3658

### TriBalance PATENTED

The TriBalance is the same shape and size as our popular TriGrip product. Like the XpoBalance this product is incredibly versatile offering a black, white and 18% grey surface on one side and a silver reflective surface on the other.



## White Balancing the Camera

The EzyBalance, XpoBalance and TriBalance all feature a unique focusing target to enable the camera to focus on the card and take the necessary readings for an accurate white balance setting. Many cameras struggle to actually focus on a plain white or grey area.



A poorly exposed and colour balanced image.



Get the model to hold the EzyBalance.



Select the Custom White Balance setting on your camera (refer to your camera manual for instructions).



Zoom in so the EzyBalance fills the whole frame of the camera and take a reading off the card (refer to your camera manual for instructions).



Your White Balance is now set so you can re-take the shot with the correct exposure and colour balance.

## Post Capture - Exposure and Colour Balancing

The EzyBalance, XpoBalance and TriBalance can also be used as an accurate reference point for post capture manipulation in Adobe Photoshop® (and other software packages). All you need to do is take the first shot with the card in the photograph each time you shoot in a different lighting situation.



A poorly exposed and colour balanced image.



Open up into Photoshop the image you took that included the card. Then open up the 'levels' adjustment window.



Select the grey dropper and click on the card. The poor exposure and colour balance is automatically corrected. Save these changes as a 'new action'.



You can then apply the 'new action' to the remainder of the batch from that shoot. All the images are automatically adjusted for you.

## Post Capture - Exposure and Colour Balancing Effects

Due to the multiple surfaces on the XpoBalance and TriBalance, these cards can be used to create some interesting 'instant' effects as well as the features already mentioned above. The TriBalance has the added benefit of a reflective silver surface on the other side so it can also be used as a traditional reflector.

You can select the grey dropper and click on any of the three grey surfaces of the XpoBalance to give a slightly different exposure and colour balance effect.

light grey surface
mid grey surface
dark grey surface





white dropper
grey dropper
black dropper





You can use the black, white and grey dropper to click on their corresponding colour range on the XpoBalance or TriBalance to emphasize that particular colour range in the shot.

### Lumen8

Lastolite's Lumen8 flash range has been designed to fulfil the needs of the most demanding working photographers. The range has been technically developed to a high level of specification offering reliability, durability and safety on location or in the studio, and now features user replaceable flash tubes. The range is further enhanced with a range of accessories which feature the popular S type bayonet fitting.



#### Features

- ▶ Available in 400w
- ▶ Auto dumping for quick light output changes
- ▶ 100w modelling bulbs so you can see clearly how you are working
- ▶ Switchable modelling light proportional or full power
- ▶ Audible ready light



#### Specifications

Lumen8	Code
Lumen8 Single Flash Head F400*	LL LL3501RT
Lumen8 replacement flash tube	LL LL3276

\*not compatible with the Ezybox Hotshoe range of softboxes

Lumen8 Accessories	Code
PVC Umbrella White (See page 46)	LL LU3212
PVC Umbrella White (See page 46)	LL LU4512
4 Section Air Cushion Stand	LL LS1159
Reflector dish 18.5cm (7")	LL LL3264
Reflector dish 25cm (10")	LL LR3580
Reflector dish 46cm (18")	LL LL3274
BeautyLite Reflector Dish	LL LL3266
Snoot	LL LL3288
Barn door and gel set for 18.5cm (7") reflector	LL LL3269
Gel Clips	LL LL3271
Honeycomb grid for 18.5cm (7") dish	LL LL3267
Honeycomb grid for 25cm (10") dish	LL LL3275
Diffuser & honeycomb for BeautyLite	LL LL3268
Sync Cable	LL LL3262
Radio Trigger (Mains Powered)	LL LL3265
Super Leuci Modelling Bulb (100W)	LL LL3261



PVC Umbrella LL LU3212



Replacement Flash Tube LL LL3276



Radio Trigger LL LL3265



Snoot LL LL3288



Barn Door and Gel Set LL LL3269



Honeycomb Grid LL LL3275



Diffuser & Honeycomb for BeautyLite LL LL3268



# Lumen8 Kits

The Lumen8 flash kit is designed for photographers who need to be mobile. The two head kit is supplied in two handy carry cases, which can also be carried on the shoulder or by hand. The high quality specification continues with the inclusion of one of Lastolite's famous black/white PVC umbrellas and a 60cm x 60cm softbox. And to finish off this ultimate flash kit two wide based, air dampened stands ensure that your lights are supported securely.

Lumen8 flash heads are not compatible with the Ezybox Hotshoe softbox range.



Kit LL LL3502RT



LL LL3505RT



LL LL3504



2 x Flash head case



LL LL3502 Stand Case Contents



2 x Flash head case contents

## Specifications

Lumen8 Kits	Flash Head 400	Reflector 18.5cm	PVC 80cm Umbrella	Light Stand	Softbox* with rods 60x60cm	Case	Sync Cable	Code
Lumen8 Flash Kit F400	2	2	1	2	1	2	2	LL LL3500RT
Lumen8 Flash Umbrella Kit F400	2	2	2	2		2	2	LL LL3502RT
Lumen8 Softbox Kit F400	2	2		2	2	2	2	LL LL3509RT
Lumen8 Flash Single Head Umbrella Kit F400	1	1	1	1		1	1	LL LL3504RT
Lumen8 Flash Single Head Softbox* Kit F400	1	1		1	1	1	1	LL LL3505RT

\*Not part of the Ezybox range of softboxes

## Lighting Control

### MegaLite PATENTED

The bigger the softbox, the softer the light!

The MegaLite is a large 180cm x 120cm (6' x 4') portable softbox and silver reflective panel. The MegaLite can be used as a floor standing unit or in conjunction with the adjustable stand (with wheels) for ultimate adjustability. The stand enables the photographer to raise the softbox up to 105cm (42") from the floor and rotate the angle of the softbox/reflector from vertical to horizontal. The softbox can be lit with one or two studio flash heads (one on each side) depending on the output required. If using the softbox with the stand (LL LB6489) the heads attach directly onto the stand so they move with the softbox making positioning very quick and easy.

#### Features

- ▶ Portable 180cm x 120cm (6' x 4') softbox
- ▶ Folds to a third of its original size
- ▶ Silver reflector on rear surface
- ▶ Optional stand with wheels and vertical and rotational movements

#### Specifications

MegaLite	Code
MegaLite softbox/reflector	LL LB6488
MegaLite Adjustable Stand with Wheels	LL LB6489



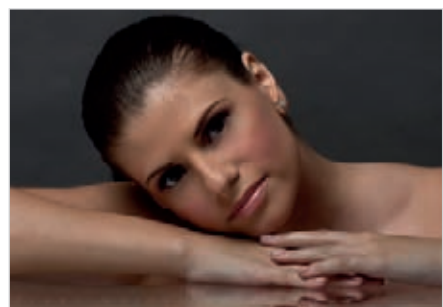
Using a traditional light stand





# KickerLite PATENTED

The KickerLite is essentially a low level 90cm x 120cm (3' x 4') floor softbox ideal as a fill light to bring out the detail in shadow areas i.e. under the chin and around the eyes. The KickerLite features an 'H' frame support to accommodate a studio flash head taking away the need for an additional light stand. The softbox features a 2 stop diffusion layer and an internal baffle (sunfire/silver) for further light manipulation. The KickerLite can also be used with battery operated flash guns.



Without KickerLite



With KickerLite

## Features

- ▶ Floor level softbox at 35 degree angle
- ▶ For true head to toe lighting
- ▶ Integrated flash head bracket
- ▶ 2 stop diffusion layer
- ▶ Can be used with battery operated flash guns
- ▶ Softbox folds to a third of its original size

## Specifications

KickerLite	Code
KickerLite SoftBox	LL LB3492



Can also be used with Speedlites

# Ezyview

Ezyview is the ideal solution for any digital photographer who struggles to view their images on a laptop outdoors. The Ezyview measures 40cm (16") square and eliminates the reflections from your screen and is of course, collapsible, so it is easy to carry with you.

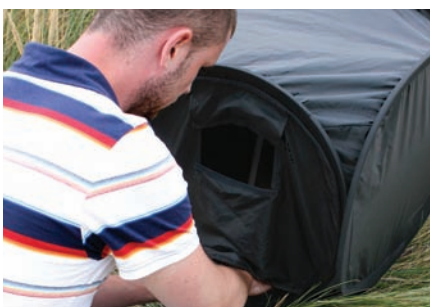


## Features

- ▶ Collapses to a third of its original size
- ▶ Waterproof fabric and steels
- ▶ Cover for viewing while using a keyboard

## Specifications

Ezyview	Code
Ezyview	LL LB2492





### RayD8 c3200

The RayD8 c3200 kit provides an entry-level studio lighting system for product and portrait photography. Using a continuous tungsten light source (3200k), this kit is based on a 'what you see is what you get' approach. The soft white 80cm umbrellas included in the kit ensure the best distribution of the light.



#### Features

- ▶ S type bayonet fitting
- ▶ Removable reflector
- ▶ Wide range of accessories available
- ▶ Ideal for product photography

#### Specifications

RayD8 c3200 accessories	Code
1x light head, power cable and reflector* (Bulb not included)	LL LL3603
500w P 2/1 Tungsten bulb	LL LR3604



3604

#### Specifications

RayD8 c3200 kit	Light Head	Reflector 25cm (10")	500w P 2/1 Bulb	Light Stand	PVC 80cm Umbrella	Code
RayD8 c3200 kit	2	2	2	2	2	LL LR8030

### RayD8 c5600

The RayD8 c5600 kit provides an entry-level studio lighting system for product and portrait photography. Featuring a high output compact fluorescent bulb (equivalent to 400w), this continuous light system offers colour corrected light at 5600k (daylight).

The bulbs are compact fluorescents and run at a low temperature, making them ideal for photographing food, people and other temperature sensitive subjects.



#### Features

- ▶ Cool running, high output
- ▶ Colour balanced
- ▶ S type bayonet fitting
- ▶ Removable diffuser cover

#### Specifications

RayD8 c5600 accessories	Code
Colour corrected 85w fluorescent bulb	LL LR8036
Fluorescent Conversion Kit - Extension Tube & Fluorescent Bulb	LL LR8037
Fluorescent extension tube	LL LR3270
1x light head, fluorescent extension tube, power cable and reflector (Bulb not included)	LL LR8038

\*Base head unit is interchangeable between the c3200 and c5600



#### Specifications

RayD8 c5600 kit	Light Head	Reflector 25cm (10")	Fluorescent Tube Extension	85w Bulb Fluorescent	Light Stand	Removable Diffuser	Code
RayD8 c5600 kit	2	2	2	2	2	2	LL LL8035

# Ezybox Hotshoe

The Ezybox Hotshoe converts your battery operated flash gun from a harsh directional light into a much softer diffused light and is available in three sizes - 38cm x 38cm, 54cm x 54cm and 76 x 76cm. The Ezybox hotshoe folds flat for easy storage and can be assembled in a matter of minutes. The inner and outer diffusers, which when used together, produces a two stop light loss. There are also a number of accessories available including extending handles, a tilthead bracket and creative diffusers.

**The Ezybox Hotshoe Softbox is not designed for use with studio flash heads.**



Removable inner + outer diffusers



Without Ezybox Hotshoe



With Ezybox Hotshoe

- Features**
- ▶ Softbox for Hotshoe flash
  - ▶ Adjustable bracket for different sized flash guns
  - ▶ Operates as a coldshoe
  - ▶ Folds flat
  - ▶ Assembled in a few minutes
  - ▶ Ideal for location use

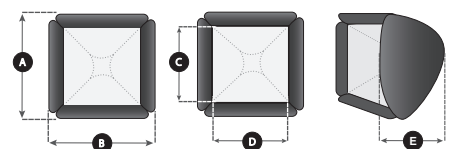


Ezybox Hotshoe with Elinchrom Quadra



Specifications						
Ezybox Hotshoe	A	B	C	D	E	Code
Ezybox Hotshoe*	46cm (18")	46cm (18")	38cm (15")	38cm (15")	35cm (14")	LL LS2438
Ezybox Hotshoe*	63cm (25")	63cm (25")	54cm (21")	54cm (21")	45cm (17½")	LL LS2462
Ezybox Hotshoe*	90cm (35½")	90cm (35½")	76cm (30")	76cm (30")	77cm (30")	LL LS2480

\*Includes Ezybox Hotshoe Plate



### Ezybox Hotshoe Accessories



Also fits Elinchrom Quadra (requires LL LS2362Q)



Elinchrom Quadra Speedring LL LS2362Q



LL LS2400 & LL LS2401



LL LS2453



LL LS2499



Ezybox Hotshoe Grid (fabric) LL LS2962 & LL LS2980

#### Specifications

Ezybox Hotshoe Accessories	Code
Fabric Grid for LL LS2462 Ezybox Hotshoe 54cm (21")	LL LS2962
Fabric Grid for LL LS2480 Ezybox Hotshoe 76cm (30")	LL LS2980
Ezybox Hotshoe plate (with standard flash mount)	LL LS2414
Flash mount adaptor for Metz 45*	LL LS2415
Flash mount adaptor for Metz 76*	LL LS2416
Flash mount adaptor for Quantum*	LL LS2417
Extending Handle (24cm - 48cm)	LL LS2400
Small handle (15cm) with spigot and hotshoe connector	LL LS2437
Non rotating extending handle 70 - 176cm**	LL LS2452
Non rotating extending handle 74 - 232cm**	LL LS2453
Waist holder for extending handles 2413 and 2435	LL LS2499
Clamp (with brass spigot)	LL LS2404
Tiltthead (with spigot)	LL LS2401
Ezybox Hotshoe Bracket Plate (extended)	LL LS24190
Hotshoe to 1/4" Screw Adaptor	LL LM2434
Spigot 1/4" to 3/8" Convertor	LL LS2418
Elinchrom Quadra Speedring	LL LS2362Q

\* Only compatible with the LL LS2414 plate  
 \*\* Includes Waist holder LL LS2499



LL LS2404



LL LS2401

### Ezybox Hotshoe Kits



#### Specifications

Ezybox Hotshoe Kits	Size	Code
Ezybox Hotshoe Kits	38cm x 38cm (15" x 15")	LL LS2470
Ezybox Hotshoe Kits	54cm x 54cm (21" x 21")	LL LS2471
Ezybox Hotshoe Kits	76cm x 76cm (30" x 30")	LL LS2472



LI LS2401

\*Kit includes: Ezybox Hotshoe (with plate), 4 section stand, tiltthead bracket (LL LS2401), extending handle (LL LS2400), padded shoulder bag and circular carry case.

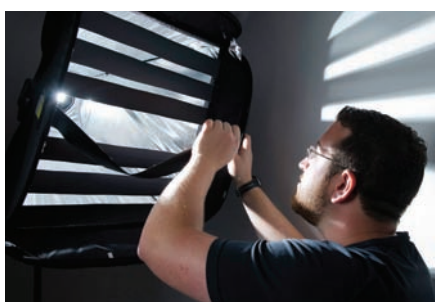


# Creative Diffusers and Mask Strips

The creative diffusers and mask strips turn the Ezybox Hotshoe into a truly creative light modifying accessory. The diffuser set includes 3 covers with a different cut out mask and a 2 stop diffusion panel. The mask strips are fully adjustable and allow the photographer to position the strips across the front of the Ezybox Hotshoe in any arrangement. These strips can be used to create the shadow effect of a venetian blind, a window, columns or simply random shapes.



LL LS2468, LL LS2469 & LL LS2467



LL LS2920

## Features

- ▶ Create the shadow effect of a window blind, window frame or pillars
- ▶ Quick and easy to set up
- ▶ Fully adjustable mask strips

## Specifications

Creative Diffusers	Code
Set of 3 diffusers for the 38cm Ezybox Hotshoe	LL LS2468
Set of 3 diffusers for the 54cm Ezybox Hotshoe	LL LS2469
Set of 3 diffusers for the 76cm Ezybox Hotshoe	LL LS2467
Creative mask strips for the 54cm Ezybox Hotshoe	LL LS2920



LL LS2920



# Triflector Speed-Lite

The ultimate beauty lighting accessory for Ezybox Hotshoe users. The Triflector Speed-Lite stand incorporates a clever overhead arm to support the Ezybox Hotshoe which alleviates the need for a separate, expensive boom arm stand. The three reflective panels (Sunfire/Silver) work in the same way as our highly acclaimed Triflector MkII (page 9) to allow the photographer to position the light exactly where he wants and achieve distinctive catchlights.



Ezybox Hotshoe not included in the kit



Without Triflector Speed-Lite



With Triflector Speed-Lite

## Features

- ▶ FOR USE WITH HOTSHOE FLASHGUNS ONLY
- ▶ All in one portable solution
- ▶ Compatible with the Ezybox Hotshoe
- ▶ Assembles in minutes
- ▶ Includes carry case

## Specifications

Triflector Speed-Lite	Code
Triflector Speed-Lite kit	LL LR2833



Ezybox Hotshoe not included in the kit

# Lastolite

Professional

## Lighting Control

### Strobo

The Strobo is a compact and simple to use creative light modifying system for battery operated flash guns. The Strobo is available in various kit configurations using two different flash gun attachment methods, one which fits directly onto a flashgun (LL LS2616, LL LS2605 & LL LS2606) and the other which utilises the highly successful Ezybox Hotshoe Plate (LL LS2617, LL LS2614 & LL LS2615). Each version incorporates clever magnetic connection points which allow a range of accessories to simply snap into place in front of the flashgun, ready to modify the raw light as it leaves the gun. The range of modifiers include honeycombs, gels, gobos, a snoot and barn doors. The modifiers can be used individually or in combination with each other.

#### Features

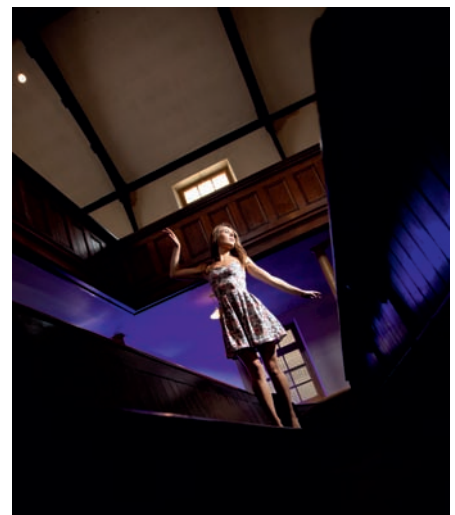
- ▶ Creative light modifiers for battery flash
- ▶ Studio lighting effects for battery flash
- ▶ Unique magnetic connecting system
- ▶ Fits neatly in your camera bag



2 x Flashguns with Strobo Honeycomb on one and Strobo red gel on the other



1 x Flashgun with Strobo Honeycomb





# Strobo Kit – Ezybox Hotshoe Plate



LL LS2617



Honeycomb



Ezybox Hotshoe Adaptor Plate



Gel set



Slide in gel holder

## Specifications

### Strobo Kit - Ezybox Hotshoe

Code
LL LS2617

#### Kit Contents\*\*

- 1x Ezybox Hotshoe Plate (2414)
- 1x Ezybox Hotshoe Plate Adaptor
- 2x Honeycomb Grids  $\frac{3}{8}$ " (9mm) and  $\frac{1}{4}$ " (6mm)
- 2x Gel Holders
- 1x Gel Set\*

### Strobo Starter Kit

Code
LL LS2614

Strobo Starter Kit - Ezybox Hotshoe Plate (Requires Ezybox Hotshoe Plate LL LS2414, not included)

#### Kit Contents\*\*

- 1x Ezybox Hotshoe Plate Adaptor
- 1x Honeycomb Grid  $\frac{3}{8}$ " (9mm)
- 1x Gel Holder
- 1x Gel Set\*

### Strobo Barn Door Kit

Code
LL LS2615

Strobo Barn Door Kit - Ezybox Hotshoe Plate (Requires Ezybox Hotshoe Plate LL LS2414, not included)

#### Kit Contents\*\*

- 1x Ezybox Hotshoe Plate Adaptor
- 1x Barn Door Set

# Strobo Kit – Direct to Flashgun



LL LS2606 Honeycomb Starter Kit



Gel holder



Honeycomb



## Specifications

### Strobo Kit - Direct to Flashgun

Code
LL LS2616

#### Kit Contents\*\*

- 1x Direct to Flashgun Bracket
- 2x Honeycomb Grids  $\frac{3}{8}$ " (9mm) and  $\frac{1}{4}$ " (6mm)
- 2x Gel Holders
- 1x Gel Set\*

### Strobo Gel Starter Kit

Code
LL LS2605

Strobo Gel Starter Kit - Direct to Flashgun

#### Kit Contents\*\*

- 1x Strobo Direct to Flashgun bracket
- 1x Gel Holder
- 1x Gel Set\*

### Strobo Honeycomb Starter Kit

Code
LL LS2606

Strobo Honeycomb Starter Kit - Direct to Flashgun

#### Kit Contents\*\*

- 1x Strobo Direct to Flashgun bracket
- 1x Honeycomb Grid  $\frac{3}{8}$ " (9mm)

#### \*Gel Set Contents:

- 1x Set of 3 Warming Gels - Full,  $\frac{1}{2}$  and  $\frac{1}{4}$  CTO
- 1x Set of 3 Cooling Gels - Full,  $\frac{1}{2}$  and  $\frac{1}{4}$  CTB
- 1x Set of 4 Coloured Gels - Red, Yellow, Blue & Green
- 1x Neutral Density 0.6 - 2 Stop Gel
- 1x Frosted 1 Stop Diffuser Gel

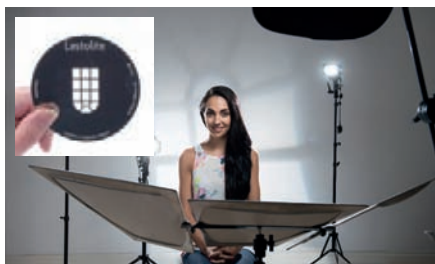
\*\* All kit contents are available separately (see page 25)



## Lighting Control

### Strobo Gobo PATENT PENDING

The Strobo Gobo kit allows you to create stunning lighting and background effects using your battery operated flash guns without the need to keep moving locations. The Gobo works with your chosen Strobo Bracket - LL LS2414 + LL LS2611 or LL LS2601. Simply attach the Gobo to your existing bracket and slide in your chosen Gobo mask. The kit comes with two Gobo masks as standard; an arched window and a dappled foliage effect. A range of alternative Gobo masks are available separately. The Gobo holder also takes traditional size B Gobos (86mm). There is even an option to create a slightly 'out of focus' effect.



#### Features

- ▶ Create different background effects without moving location
- ▶ A range of Gobo masks are available
- ▶ Can be used in conjunction with Strobo gels
- ▶ Also take standard size B Gobos (86mm)

#### Specifications

Strobo Gobo	Code
Strobo Gobo**	LL LS2625
Gobo Set - Nature* 	LL LS2613
Gobo Set - Architectural* 	LL LS2612

\*Contains 3 different Gobo's

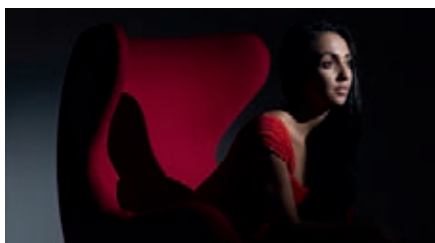
\*\*Requires Ezbox Hotshoe Plate Adapter LL LS2611 for use with the Ezybox Hotshoe Plate LL LS2414

### Strobo Collapsible Snoot PATENT PENDING

The Strobo collapsible snoot allows you to take maximum control of the light from your battery operated flash guns. Simply attach the snoot directly to your chosen Strobo bracket - LL LS2144 + LL LS2611 or LL LS2601 to create a small concentrated pool of light, ideal as a hair light or to illuminate a small part of your subject. The Strobo snoot instantly transforms the harsh light from your flash gun into an extremely creative light which traditionally could only be achieved using studio flash. For added creativity the Strobo snoot can also be used in conjunction with the Strobo gel system.



Without Strobo Snoot



With Strobo Snoot

#### Features

- ▶ Unique collapsible design for easy storage
- ▶ Create a controlled pool of concentrated light
- ▶ Can be used in conjunction with Strobo gels
- ▶ Supplied with storage pouch

#### Specifications

Strobo Collapsible Snoot	Code
Strobo Collapsible Snoot*	LL LS2619

\*Requires Ezbox Hotshoe Plate Adapter LL LS2611 for use with the Ezybox Hotshoe Plate LL LS2414



# Strobo Accessories



Barn Doors (bracket and gel holder not included)

## Specifications

Strobo Accessories	Code
Barn Doors for Strobo	LL LS2620
Honeycomb Set 3/8" (9mm) and 1/4" (6mm)	LL LS2602
Gel Holder Set (x2)	LL LS2603
Gel Set*	LL LS2604
Strobo Ezybox Hotshoe Plate Adaptor	LL LS2611
Strobo Direct to Flashgun Bracket	LL LS2601
Ezybox Hotshoe Plate	LL LS2414

**\*Gel Set Contents:**

- 1x Set of 3 Warming Gels - Full, 1/2 and 1/4 CTO
- 1x Set of 3 Cooling Gels - Full, 1/2 and 1/4 CTB
- 1x Set of 4 Coloured Gels - Red, Yellow, Blue & Green
- 1x Neutral Density 0.6 - 2 Stop Gel
- 1x Frosted 1 Stop Diffuser Gel



LL LS2602



LL LS2603



LL LS2604 Gel Set



LL LS2611 Ezybox Hotshoe Plate Adaptor

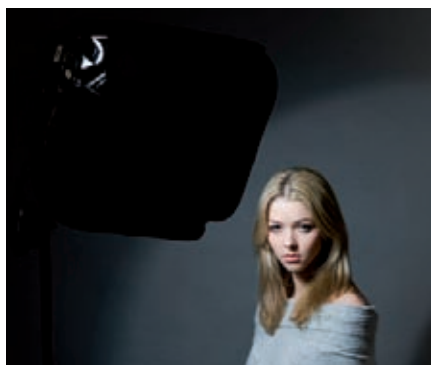


Strobo Direct to Flashgun Bracket LL LS2601

# Beauty Box



Beautybox / Softbox 38cm (15") LL LS2650



## Features

- ▶ White interior for softer, richer and creamier light
- ▶ Suspended inner baffle and outer mask
- ▶ Alternative outer diffuser
- ▶ Incorporates the Ezybox Hotshoe Plate LL LS2414

## Specifications

Beautybox / Softbox 38cm (15")	Code
Beautybox / Softbox 38cm (15")	LL LS2650



### Hotrod Octa Softbox

In addition to our traditional square Ezybox Hotshoe softbox we have now introduced Octa softboxes for use with battery operated flashguns. The Octas are available in two different sizes and feature an inner diffusion panel and an adaptor plate with rods (which supports the weight of the softbox). The flashgun simply slides into a shoe mount attached to the adaptor plate.

#### Features

- ▶ Octa box for an alternative catchlight
- ▶ Simple assembly
- ▶ Slide on shoe mount for flashgun

#### Specifications

Hotrod Octa Softbox	Code
Hotrod Octa Softbox 70cm (27.5")	LL LS2670
Hotrod Octa Softbox 90cm (36")	LL LS2690
Hotrod Octa Elinchrom Quadra Kit 70cm (27.5")	LL LS2670Q
Hotrod Octa Elinchrom Quadra Kit 90cm (36")	LL LS2690Q
Fabric Grid for LL LS2670	LL LS2970
Fabric Grid for LL LS2690	LL LS2991



Elinchrom Quadra Kit

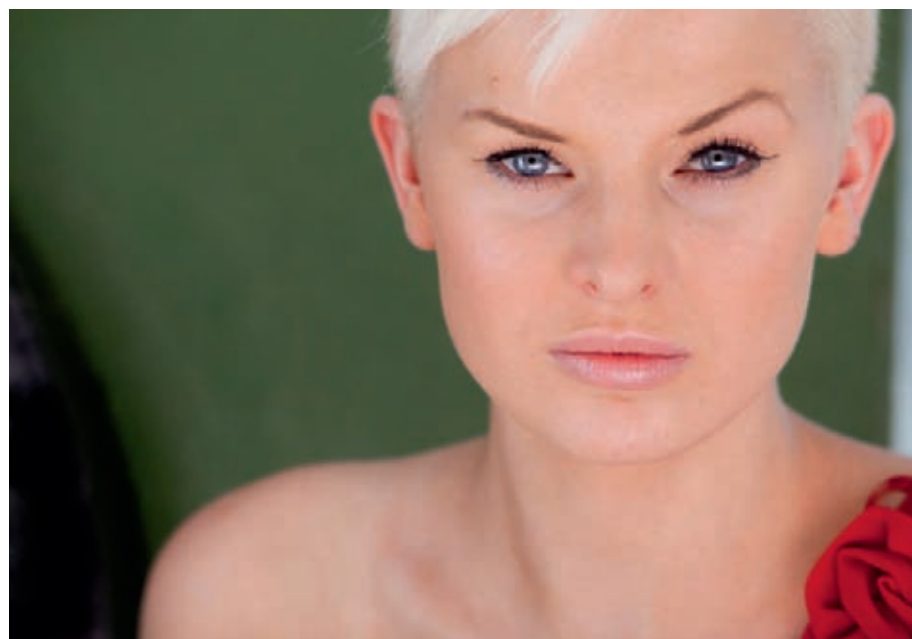


Octa shaped catchlights



# Hotrod Strip Softbox

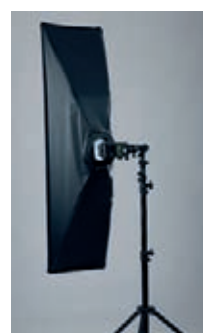
In addition to our traditional square Ezybox Hotshoe softbox we have now introduced strip softboxes for use with battery operated flashguns. The strips are available in two different sizes and feature an inner diffusion panel and an adaptor plate with rods (which supports the weight of the softbox). The flashgun simply slides into a shoe mount attached to the adaptor plate.



- Features**
- ▶ Strip box for full length lighting
  - ▶ Simple assembly
  - ▶ Slide on shoe mount for flashgun

**Specifications**

Hotrod Strip Softbox	Code
Hotrod Strip Softbox 30cm x 120cm (12" x 48")	LL LS2630
Hotrod Strip Softbox 40cm x 120cm (16" x 48")	LL LS2640
Hotrod Strip Elinchrom Quadra Kit 30cm x 120cm (12" x 48")	LL LS2630Q
Hotrod Strip Elinchrom Quadra Kit 40cm x 120cm (16" x 48")	LL LS2640Q
Fabric Grid for LL LS2630	LL LS2930
Fabric Grid for LL LS2640	LL LS2940



Rear of box



Front of box





## Lighting Control

### Ezybox Speed-Lite

The Ezybox Speed-Lite is a 22cm x 22cm (8.5" x 8.5") mini softbox which attaches directly onto a flashgun whether it's on or off camera.

The softbox folds in the same way as our other highly successful Ezybox softboxes making it an ultra portable solution for busy photographers. The Ezybox Speed-Lite also features an inner and outer diffuser (both removable), which when used together, produces a two stop light loss, delivering an unrivalled softness of light.

#### Features

- ▶ Assembled in seconds
- ▶ Removable inner and outer diffuser
- ▶ Folds flat for easy storage



EzyBox Speed-Lite on camera



Without EzyBox Speed-Lite



With EzyBox Speed-Lite



EzyBox Speed-Lite off camera hand held



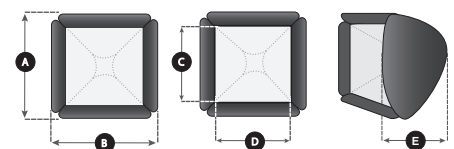
Ezybox Speed-Lite Kit LL LS2431 / LL LS2432



#### Specifications

Ezybox Speed-Lite	A	B	C	D	E	Code
Ezybox Speed-Lite	28cm (11")	28cm (11")	22cm (8.5")	22cm (8.5")	20cm (8")	LL LS2420
Ezybox Speed-Lite Kit* (Nikon)	28cm (11")	28cm (11")	22cm (8.5")	22cm (8.5")	20cm (8")	LL LS2431
Ezybox Speed-Lite Kit* (Canon)	28cm (11")	28cm (11")	22cm (8.5")	22cm (8.5")	20cm (8")	LL LS2432

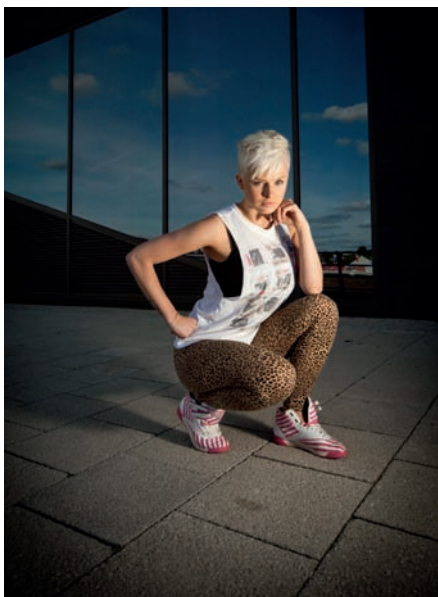
\*Kit contents: Ezybox Speed-Lite, Small Handle with spigot and hotshoe connector and 1m (Nikon or Canon) Off Camera Cord





# Micro Apollo MkII

A simple collapsible softbox which fits direct to your flashgun. The Micro Apollo slides directly on to your gun and is secured in place thanks to an innovative internal frame structure and elasticated collar which requires no additional fixing mechanism to be permanently attached to your flash. Fits neatly in your camera bag - a great 'always with you' accessory.



Micro Apollo MKII LL LS2210 / LL LS2214

## Features

- ▶ Simple slide on elasticated fitting
- ▶ No permanent fixing system attached to your flash gun
- ▶ Folds flat for easy storage
- ▶ 1-stop light loss

## Specifications

Micro Apollo	Size	Code
Micro Apollo MkII 45°	W: 20cm x H: 13cm (8" x 5½")	LL LS2210
Micro Apollo MkII 60°	W: 25cm x H: 18cm (10" x 7")	LL LS2214

\* Not compatible with hammerhead style flashguns



# Hotshoe Tiltheads

The Tilthead Shoe Lock features an adjustable 'screw locking' shoe mount which offers an additional locking mechanism to work alongside the built in method used on the flashgun.

The dimensions of the hotshoe on the bottom of each flashgun can vary from one gun to the other. However, the Tilthead Shoe Lock can comfortably accommodate these variances.



LL LS2434



LL LS2422



## Features

- ▶ Slide on or screw locking versions
- ▶ Ratchet movement tilt mechanism
- ▶ Umbrella socket

## Specifications

Tiltheads	Code
Tilthead (ratchet movement) with flash shoe	LL LS2402
Tilthead with flash shoe	LL LS2403
Tilthead Shoe Lock	LL LS2422
Spigot 1/4" to 3/8" Converter	LL LS2418
Hotshoe to 1/4" Screw Adaptor	LL LS2434



LL LS2422



LL LS2402

## Lighting Control

### Ezybox II

Ezybox II is a range of unique fast fit softboxes which can be used with traditional studio flash, battery operated flash guns and the Elinchrom Ranger Quadra RX range. The softboxes feature a unique softbox frame which fits directly to our Ezybox Square, Ezybox Octa and Ezybox Switch softboxes. Depending on your chosen light source, a choice of adapters can then be used to link the light source to the softbox frame. So, rather than buying different softboxes for every light you own the Ezybox II now offers a true 'one system fits all' solution.

#### Features

- ▶ Multi light system bracket
- ▶ Compatible with all 7 Ezybox II softboxes
- ▶ Also works with umbrellas when using flash guns
- ▶ Bracket ships with Tilthead Spigot (LL LS2401) and two way trigger cable



The Ezybox II Softbox Frame



Ezybox II Speedlight bracket with softbox frame



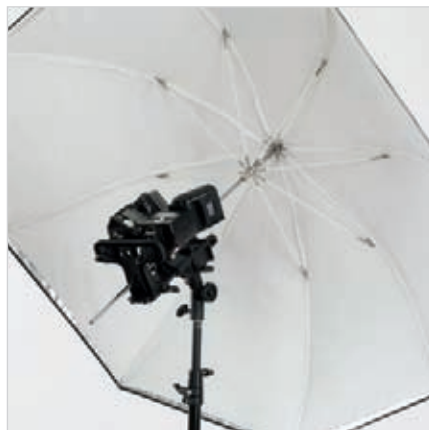
With flashguns and trigger



With studio flash



With Elinchrom Quadra



With flashguns and umbrella

# Ezybox II - Square

The Ezybox II is the world's first softbox designed to fit studio flash, battery operated flash guns and the Elinchrom Ranger Quadra RX. Designed to meet the demands of modern day photographers who shoot with studio flash and battery flash, the Ezybox II enables them to carry one softbox which fits all their lighting kit and switches from one to the other using simple connectors, without making any adjustments to the softbox itself.

The Ezybox II Square softbox is our lightest softbox ever. Fast to assemble, the softbox simply pops open and is secured using 2 support rods and our unique Ezybox II softbox frame. The Ezybox II Square is available in 3 sizes - small, medium and large (see below for measurements) and feature inner and outer diffusers which when used together, produces a two stop light loss and simply requires the correct connection kit depending on your chosen light source(s).

## Features

- ▶ Unique world's first design.
- ▶ Can be used with studio flash, battery operated flash guns and Elinchrom Quadra
- ▶ Extremely lightweight and sturdy
- ▶ Optional grids available



Use with flash guns



Use with Elinchrom Quadra



Use with Studio Flash

## Fabric Grids

Fabric Grids	Code
Fabric grids for Ezybox II Square - Small	LL LS2950
Fabric grids for Ezybox II Square - Medium	LL LS2951
Fabric grids for Ezybox II Square - Large	LL LS2952

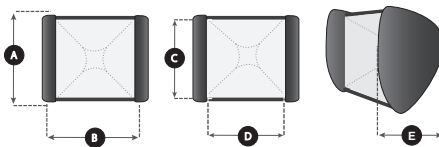
## Connection Kits

Connection Kits	Code
Ezybox II Speedlight Bracket*	LL LS2701
Ezybox II Elinchrom Quadra Spigot	LL LS2705
Ezybox II Speeding Plate (Bowens)	LL LS2351N
Ezybox II Speeding Plate (Elinchrom)	LL LS2352N
Ezybox II Speeding Plate (Balcar)	LL LS2353N
Ezybox II Speeding Plate (Profoto)	LL LS2354N
Ezybox II speeding Plate (Hensel Contra)	LL LS2356N
Ezybox II Speeding Plate (Multiblitz Compact)	LL LS2357N

\*Includes Umbrella Holder, Tilthead Spigot (LL LS2401) and two way trigger cable

## Specifications

Ezybox II Square	A	B	C	D	E	Code
Ezybox II Square - Small	50cm (20")	64cm (25")	45cm (18")	45cm (18")	34cm (13½")	LL LS2710
Ezybox II Square - Medium	64cm (25")	76cm (30")	60cm (24")	60cm (24")	40cm (16")	LL LS2711
Ezybox II Square - Large	94cm (37")	120cm (47")	90cm (35½")	90cm (35½")	54cm (21")	LL LS2712





### Ezybox II - Octa

The Ezybox II is the world's first softbox designed to fit studio flash, battery operated flash guns and the Elinchrom Ranger Quadra RX. Designed to meet the demands of modern day photographers who shoot with studio flash and battery flash, the Ezybox II enables them to carry one softbox which fits all their lighting kit and switches from one to the other using simple connectors, without making any adjustments to the softbox itself.

The Ezybox II Octa softbox is our lightest Octa ever. Fast to assemble, the softbox simply pops open and is secured using 4 support rods and our unique Ezybox II softbox frame. The Ezybox II Octa is available in 2 sizes - medium and large (see below for measurements) and feature inner and outer diffusers which when used together, produces a two stop light loss and simply requires the correct connection kit depending on your chosen light source(s).

Save time and money with the Ezybox II Octa softbox.

#### Features

- ▶ Unique world's first design.
- ▶ Can be used with studio flash, battery operated flash guns and Elinchrom Quadra
- ▶ Extremely lightweight and sturdy
- ▶ Optional grids available
- ▶ Hexagonal catchlights in the eyes
- ▶ Includes a square mask



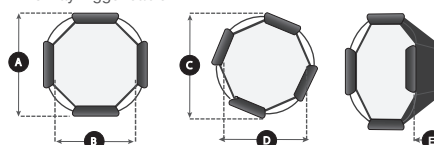
Use with Elinchrom Quadra



Use with flash guns

Fabric Grids	Code
Fabric grids for Ezybox II Octa - Medium	LL LS2953
Fabric grids for Ezybox II Octa - Large	LL LS2954
Connection Kits	Code
Ezybox II Speedlight Bracket*	LL LS2701
Ezybox II Elinchrom Quadra Spigot	LL LS2705
Ezybox II Speedring Plate (Bowens)	LL LS2351N
Ezybox II Speedring Plate (Elinchrom)	LL LS2352N
Ezybox II Speedring Plate (Balcar)	LL LS2353N
Ezybox II Speedring Plate (Profoto)	LL LS2354N
Ezybox II speedring Plate (Hensel Contra)	LL LS2356N
Ezybox II Speedring Plate (Multiblitz Compact)	LL LS2357N

\*Includes Umbrella Holder, Tiltthead Spigot (LL LS2401) and two way trigger cable



#### Specifications

Ezybox II Octa	A	B	C	D	E	Code
Ezybox II - Octa Medium	97cm (38")	80cm (31½")	99cm (39")	88cm (35")	52cm (20½")	LL LS2720
Ezybox II - Octa Large	117cm (46")	102cm (40")	120cm (47")	112cm (44")	66cm (26")	LL LS2721

# Ezybox II - Switch

The Ezybox II is the world's first softbox designed to fit studio flash, battery operated flash guns and the Elinchrom Quadra. Designed to meet the demands of modern day photographers who shoot with studio flash and battery flash, the Ezybox II enables them to carry one softbox which fits all their lighting kit and switches from one to the other using simple connectors, without making any adjustments to the softbox itself.

The Ezybox II Switch is the world's first softbox which can be switched from a square format to a rectangular format. Fast to assemble, the softbox simply pops open and is secured using 2 support rods and our unique Ezybox II softbox frame. To adjust the format, a simple zip system is used to expand or retract the width of 2 of the side panels. The Ezybox II Switch is available in 2 sizes - large and extra large (see below for measurements) and feature inner and outer diffusers which when used together, produces a two stop light loss and simply require the correct connection kit depending on your chosen light source(s).

Two softboxes in one!



Ezybox II - Switch in wide setting



Zip closes to adjust box dimensions



Ezybox II - Switch in narrow setting

## Features

- ▶ Unique world's first design.
- ▶ Can be used with studio flash, battery operated flash guns and Elinchrom Quadra
- ▶ Extremely lightweight and sturdy
- ▶ Optional grids available



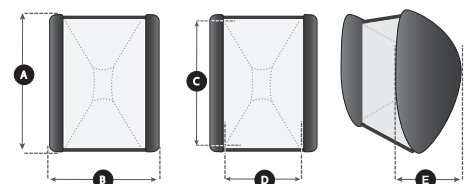
## Fabric Grids

Fabric Grids	Code
Fabric grids for Ezybox II Switch Large (Narrow)	LL LS2955
Fabric grids for Ezybox II Switch Large (Wide)	LL LS2952
Fabric grids for Ezybox II Switch XLarge (Narrow)	LL LS2956
Fabric grids for Ezybox II Switch XLarge (Wide)	LL LS2957

## Connection Kits

Connection Kits	Code
Ezybox II Speedlight Bracket*	LL LS2701
Ezybox II Elinchrom Quadra Spigot	LL LS2705
Ezybox II Speedring Plate (Bowens)	LL LS2351N
Ezybox II Speedring Plate (Elinchrom)	LL LS2352N
Ezybox II Speedring Plate (Balcar)	LL LS2353N
Ezybox II Speedring Plate (Profoto)	LL LS2354N
Ezybox II speedring Plate (Hensel Contra)	LL LS2356N
Ezybox II Speedring Plate (Multiblitz Compact)	LL LS2357N

\*Includes Umbrella Holder, Tilthead Spigot (LL LS2401) and two way trigger cable



## Specifications

Ezybox II Switch	A	B	C	D	E	Code
Ezybox II - Switch Large (Narrow) (Wide)	94cm (37")	65cm (25½")	89cm (35")	44cm (17")	63cm (25")	LL LS2730
	94cm (37")	125cm (49")	89cm (35")	89cm (35")	42cm (16½")	
Ezybox II - Switch Extra Large (Narrow) (Wide)	121cm (48")	64cm (25")	117cm (46")	44cm (17")	61cm (24")	LL LS2731
	121cm (48")	116cm (46")	117cm (46")	90cm (35½")	43cm (17")	

### Ezybox II - Configuration Chart

#### Step 1

#### Select softbox shape



Softbox comes with Ezybox II Softbox frame.

Code	
Ezybox II Octa - Medium	LL LS2720
Ezybox II Octa - Large	LL LS2721



Softbox comes with Ezybox II Softbox frame.

Code	
Ezybox II Square - Small	LL LS2710
Ezybox II Square - Medium	LL LS2711
Ezybox II Square - Large	LL LS2712



Softbox comes with Ezybox II Softbox frame.

Code	
Ezybox II Switch - Large	LL LS2730
Ezybox II Switch - Xlarge	LL LS2731

#### Step 2

#### Select your light source \*



For studio flash, you will require a compatible Ezybox II Speedring for your system.



For speedlight, you will require the Ezybox II Speedlight Bracket.



For Elinchrom Quadra, you will require the Ezybox II Speedlight Bracket plus the Quadra Spigot

#### Step 3

#### Select the correct connector



Code	
Bowens	LL LS2351N
Elinchrom	LL LS2352N
Balcar	LL LS2353N
Profoto	LL LS2354N
Hensel Contra	LL LS2356N
Multiblitz Compact	LL LS2357N



Code	
Ezybox II Speedlight Bracket**	LL LS2701

\*\*Includes 2 way 3.5 jack, PC sync cable and tilthead spigot.



Code	
Ezybox II Speedlight Bracket	LL LS2701
Quadra Spigot	LL LS2705

\* Light source not included



## TriFlash Shoe Lock

The TriFlash Shoe Lock is a unique bracket which allows photographers to attach up to three flashguns onto one light stand. The bracket features an umbrella socket so the gun(s) can be used with or without a shoot through or reflective umbrella. The adjustable 'screw locking' shoe mounts offer an additional locking mechanism to work alongside the built in method used on a flashgun. Whether you are looking for increased overall power or a quicker recycling time with the guns on a lower power, the TriFlash Shoe Lock will be a valuable addition to your kit.



### Features

- ▶ Attach up to three flash guns
- ▶ Screw locking
- ▶ Can be mounted onto a standard brass spigot
- ▶ Umbrella socket

### Specifications

TriFlash Shoe Lock	Code
TriFlash Shoe Lock	LL LA2423



## TriFlash Sync

The TriFlash Sync is identical to the TriFlash Shoe Lock but with the added benefit of a built in sync system allowing the photographer to fire up to three flash guns from one triggering device.

The sync bracket can be fired by either the built in slave cell or via a triggering device plugged into the built in X sync/PC sync socket. The built in slave cell can be adjusted to allow for none, 1, 2 or 3 pre flashes if required.

The TriFlash Sync is shipped with a 3.5mm to 3.5mm mono jack cable and a 3.5mm mono jack to PC Sync cable to attach third party triggering systems. There is also a dummy cold shoe included for photographers who only work with one or two guns and want to slide their trigger receiver (i.e. Pocket Wizard) onto one of the spare shoe mounts.

### Features

- ▶ Attach up to three flash guns
- ▶ Built in slave cell with pre-flash recognition
- ▶ X sync/PC sync socket for third party triggering devices

### Specifications

TriFlash Sync	Code
TriFlash Sync	LL LA2455



TriFlash using built in slave cell



TriFlash with Pocket Wizard

### Ezybox II Quad PATENT PENDING

The ultimate flashgun bracket. Whether you are looking for more power to freeze the action or a faster recycling time from your flashguns the Ezybox II Quad is the perfect solution. Simply attach up to 4 flashguns to the bracket, then attach one of our Ezybox II Octa softboxes (page 32) or umbrellas (page 43 - 46) to create a beautifully diffused light. Whether you are looking for more power to freeze the action or a faster recycling time from your flashguns, the Ezybox II Quad is the perfect solution.

#### Features

- ▶ Attach up to 4 flash guns
- ▶ Strong robust design
- ▶ Can be used with the Ezybox II Octa softboxes or umbrellas
- ▶ Includes PC and 3.5mm jack cables
- ▶ Kits include a square mask

#### Specifications

	Code
Ezybox II Quad Bracket*	LL LS2530
Quad Bracket**	LL LS2535
Ezybox II Octa Quad Kit Medium	LL LS2520
Ezybox II Octa Quad Kit Large	LL LS2521

\*Compatible with Ezybox Studio and Ezybox II Octa  
 \*\*For use with flashguns only



LL LS2535 with Mega Umbrella (page 46)



Quad Bracket LL LS2535



Ezybox Quad Bracket LL LS2530



Quad Bracket LL LS2535





## Off Camera Cords

A range of extension cords to enable the photographer to position their battery operated flashguns up to 3m (9'9") away from the camera. Available in Canon, Nikon, Pentax, Olympus and Sony versions. A shorter 1m (3'3") cord is also available for Canon and Nikon only.



Single eTTL Canon Pro (1m) LL LS9902



Single iTTL Nikon Pro (10m) LL LS9921

### Features

- ▶ Single shoe mount
- ▶ Retains all TTL metering
- ▶ Position gun up to 3m from the camera
- ▶ Available to fit Canon, Nikon, Pentax, Olympus and Sony

### Specifications

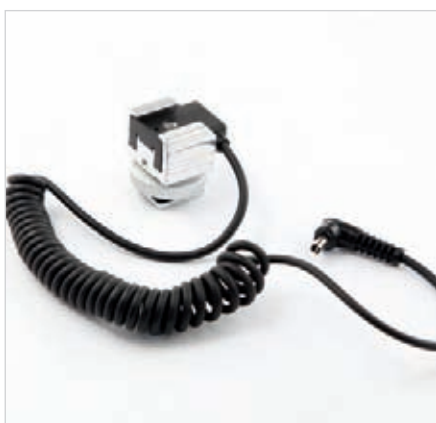
Off Camera Cords 3m		Code
Single eTTL Canon Pro (3m)		LL LS2424
Single iTTL Nikon Pro (3m)		LL LS2425
Single pTTL Pentax (3m)		LL LS2426
Single eTTL Olympus (3m)		LL LS2427
Single eTTL Sony (3m)*		LL LS2428
Off Camera Cords 1m		Code
Single iTTL Nikon Pro (1m)		LL LS9901
Single eTTL Canon Pro (1m)		LL LS9902
Off Camera Cords 10m		Code
Single eTTL Canon Pro (10m)		LL LS9922
Single iTTL Nikon Pro (10m)		LL LS9921

\*iISO fitting

## Sync Block

The Sync Block (non TTL) is ideal for photographers who want the benefits of using a radio trigger but do not have a sync connection socket on their flashgun.

Simply attach the cast aluminium sync block to the bottom of the flashgun and then plug the sync cable attached to the block into the remote radio trigger receiver unit. The flashgun can now be fired via the remote transmitter fitted to the hotshoe on the top of the camera. The Lastolite sync block is compatible with any radio trigger featuring a PC sync/X sync socket.



### Features

- ▶ Non TTL
- ▶ For flashguns without an X sync/PC sync socket

### Specifications

Sync Block for remote triggers		Code
Sync Block for remote triggers		LL LA2419



### Elinchrom Quadra Accessories

A range of softboxes to fit the Elinchrom Ranger Quadra series. Following requests from many Elinchrom users we have now designed our softbox frames to accommodate the Quadra range. So now Quadra users can enjoy the benefits of the highly acclaimed Ezybox Hotshoe softbox, the Hotrod strip and Octa softboxes and the Ezybox II square, octa and switch softboxes.

#### Features

- ▶ A range of square, rectangular, strip and octa softboxes available
- ▶ Speedring adapter for a perfect fit

#### Specifications

Elinchrom Quadra Accessories	Code
Elinchrom Quadra Speedring*	LL2362
Hotrod Strip Elinchrom Quadra Kit (See page 27) 30cm x 120cm (12" x 48")	LL LS2630Q
Hotrod Strip Elinchrom Quadra Kit (See page 27) 40cm x 120cm (16" x 48")	LL LS2640Q
Hotrod Octa Elinchrom Quadra Kit (See page 26) 70cm (27.5")	LL LS2670Q
Hotrod Octa Elinchrom Quadra Kit (See page 26) 90cm (36.5")	LL LS2690Q
Ezybox II Quadra Spigot	LL LS2705
Ezybox II Square - Small (See page 31)	LL LS2710
Ezybox II Square - Medium (See page 31)	LL LS2711
Ezybox II Square - Large (See page 31)	LL LS2712
Ezybox II Octa - Medium (See page 32)	LL LS2720
Ezybox II Octa - Large (See page 32)	LL LS2721
Ezybox II Switch - Large (See page 33)	LL LS2730
Ezybox II Switch - Extra Large (See page 33)	LL LS2731

\*For use with Ezybox Hotshoe



LL LS2362



Quadra with Ezybox Hotshoe



Hotrod Kit Speedring Connector



Quadra with Hotrod Strip



Quadra with Ezybox II - Square

## Joe McNally Intro

Joe McNally is an internationally acclaimed photographer whose career has spanned 30 years and included assignments in over 50 countries. He has shot cover stories for TIME, Newsweek, Fortune, New York, Entertainment Weekly, The New York Times Sunday Magazine, and Men's Journal. He has been a contract photographer for Sports Illustrated, a staff photographer at LIFE, and, currently, an ongoing 23-year contributor to the National Geographic. Joe was listed by American Photo as one of the 100 Most Important People in Photography and described by the magazine as "perhaps the most versatile photojournalist working today". He has been honored as a member of Kodak-PDN Legends Online, as well as being a Nikon Legend Behind the Lens. In 2010, he was voted as one of the 30 most influential photographers of the decade in an industry wide Photo District News survey.



## Joe McNally TriGrip

The Joe McNally 90cm TriGrip system features a 2-stop diffuser panel, a TriFlip reflector sleeve and a window mask sleeve. The reflector sleeve simply slides over the diffuser panel to create a bounce reflector and offers four different surfaces – Silver/Sunfire and Sunlite/Soft Silver. The second sleeve is all black with a 54cm x 38cm cut out window opening which reveals the diffuser panel underneath, creating a rectangular shoot through panel for battery operated flashguns. Also included with this sleeve are two additional black panels which Joe uses to alter the size and shape of the window so he can control how much and where the light falls on the subject.



Lighting stand and TriGrip Bracket not included



### Features

- ▶ Can be held with just one hand
- ▶ Use as a reflector or a diffuser
- ▶ Shoot through mask for ultimate control

### Specifications

Joe McNally TriGrip	Code
Joe McNally TriGrip Kit	LL LR3996JM



Lighting stand and TriGrip Bracket not included



### Joe McNally Ezybox

The Joe McNally Ezybox Hotshoe is a new addition to our highly acclaimed softbox range for battery operated flashguns. Unlike our existing range of Ezybox Hotshoe softboxes, the Joe McNally version features a white interior rather than silver which offers a slightly softer creamier level of diffusion. As with our other softboxes this version features two removable diffusion layers and is compatible with our softbox accessories such as Grids and the Creative Mask Strips.



#### Features

- ▶ Adjustable bracket for different sized flash guns
- ▶ Inner and outer diffuser
- ▶ White interior

#### Specifications

Joe McNally Ezybox Hotshoe	Code
Joe McNally White Ezybox Hotshoe 54cm x 54cm (21" x 21")	LL LR2462JM



Double diffusion layer

### Joe McNally TriFlash

The Joe McNally TriFlash is the latest addition to our successful TriFlash range. Joe's version of this product features unique rotating shoe mounts which allow him to position his flashguns so that the IR receiver on the guns are always pointing to camera position, ensuring reliable off camera flash triggering, particularly in bright conditions where Joe sometimes finds IR triggering difficult.



#### Features

- ▶ Attach up to three flashguns
- ▶ Rotating shoe mounts
- ▶ Screw locking

#### Specifications

Joe McNally Rotating TriFlash	Code
Joe McNally Rotating Locking TriFlash Tilthead	LL LR2457JM



## Joe McNally Skylite

The Joe McNally Skylite contains a standard Lastolite 1.1m x 1.1m aluminium frame plus a new 'slide on' 2 stop diffuser panel. The Skylite also includes a telescopic crossbar assembly which can support the Skylite frame and up to 4 flashguns on sliding shoe mounts which can be spaced apart or grouped together. The crossbar is fully adjustable so Joe can select the angle of the flashguns and their distance from the diffusion panel. The assembly easily attaches to a standard light stand (not included) making it an extremely versatile shoot through panel for battery flash photographers.



### Features

- ▶ Aluminium lightweight frame
- ▶ Attach up to 4 flashguns
- ▶ Fully adjustable

### Specifications

Joe McNally Skylite Kit	Code
Joe McNally Skylite Kit	LL LR81145JM



## Joe McNally UpLite PATENT PENDING

The Joe McNally UpLite features two 120cm x 90cm (4' x 3') double sided reflectors (silver/white and sunlite/soft silver) plus a 120cm x 90cm (4' x 3') 2 stop diffuser panel. Any combination of these panels can be paired up to form a floor level bounce reflector, and can be adjusted to alter the angle of the panels from 30 degrees to 80 degrees. Joe will sometimes replace the top reflector panel with the diffuser, and shoot one or more of his flash guns through the panel, giving him a fully controllable diffused fill light. Waterproof sprung steel and a waterproof shower cap protect the base when used outdoors whatever the weather.



### Features

- ▶ Self supporting reflector/diffuser panels
- ▶ 30 to 80 degree positions
- ▶ Ideal for outdoor use
- ▶ Waterproof base bottle top

### Specifications

Joe McNally UpLite Kit	Code
Joe McNally UpLite Kit	LL LR3497JM





### Brolly Grip

The ultimate light modifier for the photographer who needs to be mobile. The new Brolly Grip is a unique hand held bracket which supports the flashgun in a horizontal position along the shaft of an umbrella. A 20" translucent umbrella is included in the kit to create a compact, quick to assemble 'shoot through' solution for photographers.



#### Features

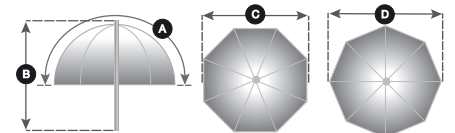
- ▶ Flashgun close to umbrella shaft
- ▶ Hand held or used on a stand
- ▶ 10mm shaft (TriFold) 8mm shaft 50cm (20")



LL LU2127 TriFold



White Translucent 1 Stop



Specifications					
Brolly Grip					Code
Brolly Grip handle					LL LU2125
Brolly Grip kit with translucent umbrella					LL LU2126
Brolly Grip kit with TriFold Umbrella					LL LU2130
Umbrellas	A	B	C	D	Code
Translucent	66cm (26")	58.5cm (23")	51cm (20")	58cm (23")	LL LU2123
Translucent - TriFold (For use with flashguns only)	112cm (44")	39cm (15")	89.5cm (35")	98cm (39")	LL LU2127
Off Camera Cords 1m	Code				
Single iTTL Nikon Pro (1m)	LL LS9901				
Single eTTL Canon Pro (1m)	LL LS9902				



# 8:1 Umbrella

The 8:1 is the ultimate umbrella offering more versatility than any other umbrella on the market. The different combinations are as follows:

- White bounce
- Silver bounce
- Shoot through
- Shoot through with square mask
- Shoot through box
- Shoot through box with square mask
- Umbrella box (bounce) with silver interior
- Umbrella box (bounce) with white interior

The 8:1 can be used with studio flash and battery operated flashguns.



White Bounce



Silver Bounce



Shoot Through



Shoot Through with square mask



Shoot Through Box



Shoot Through Box with square mask

## Specifications

8:1 Umbrella	A	B	C	D	Code
8:1 Umbrella	112cm (44")	71cm (28")	94.5cm (37")	101.6cm (40")	LL LU4538F

## Features

- ▶ Umbrella and softbox functionality
- ▶ 8mm shaft
- ▶ Includes carry pouch for storage when not in use
- ▶ Fibreglass frames



Umbrella Box (Bounce) with silver interior



Umbrella Box (Bounce) with white interior

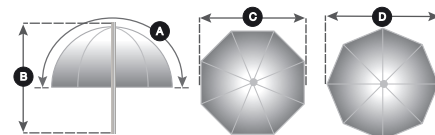
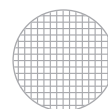
Silver



White Translucent  
1 Stop (shoot through)



White Translucent  
2 Stop (umbrella box)

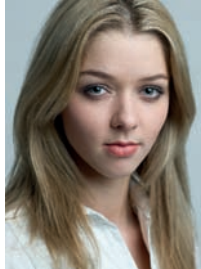


## Lighting Control

### Umbrellas - Reversible



Silver/Gold



White



Gold



Sunfire/Silver



Silver

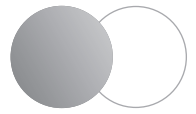


Sunfire

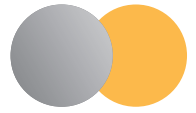
#### Features

- ▶ Reversible covers
- ▶ 4 different reflective surfaces
- ▶ Includes carry case
- ▶ 8mm shaft

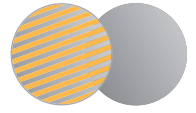
Silver / White



Silver / Gold

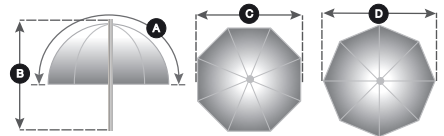


Sunfire / Silver



#### Specifications

Colour	A	B	C	D	Colour Temp.	Light Loss	Code
Sunfire/Silver	112cm (44")	71cm (28")	94.5cm (37")	101.6cm (40")	4750k/5600k	-0.5/-1.3f	LL LU4536F
Silver/Gold	112cm (44")	71cm (28")	94.5cm (37")	101.6cm (40")	5600k/3800k	-0.6/-1.2f	LL LU4534F
Silver/White	112cm (44")	71cm (28")	94.5cm (37")	101.6cm (40")	5600k	-0.5/-1.3f	LL LU4531F



### Umbrellas - Dual Duty



Shoot Through/White Bounce



White



White Bounce with Black behind



Pair

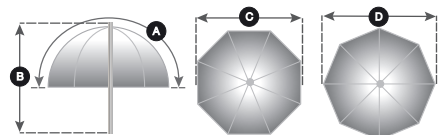
#### Features

- ▶ Can be used as a shoot through or translucent white bounce with black surface behind
- ▶ Includes carry case
- ▶ 8mm shaft

Black



White Translucent 1 Stop



#### Specifications

Colour	A	B	C	D	Colour Temp.	Light Loss	Code
Black/White	92.5cm (36½")	61cm (24")	78cm (31")	84.5cm (33")	5600k/5450k	-1.3f	LL LU3221F

## Umbrellas - Dual



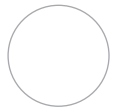
LL LU3223F / LL LU4523F



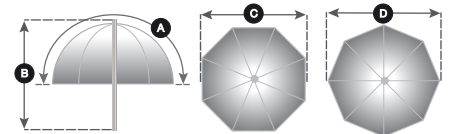
### Features

- ▶ Removable outer cover
- ▶ Translucent shoot through
- ▶ Translucent white bounce with silver behind
- ▶ Umbrella spokes are concealed behind translucent fabric
- ▶ 8mm shaft

White



White Translucent 1 Stop



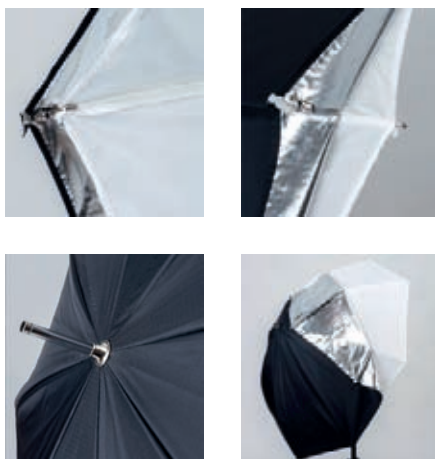
### Specifications

Colour	A	B	C	D	Colour Temp.	Light Loss	Code
White Bounce / Translucent	92.5cm (36½")	61cm (24")	78cm (31")	84.5cm (33")	5600k 5450k	-0.3f (bounce) -0.6f (shoot through)	LL LU3223F
White Bounce / Translucent	112cm (44")	71cm (28")	94.5cm (37")	101.6cm (40")	5600k 5450k	-0.3f (bounce) -0.6f (shoot through)	LL LU4523F

## Umbrellas - All in One



LL LU4537F



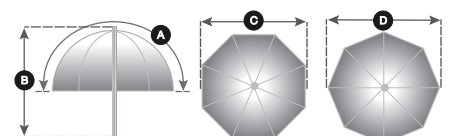
### Features

- ▶ Removable covers
- ▶ Translucent shoot through
- ▶ Translucent white bounce
- ▶ White bounce with silver behind
- ▶ Silver bounce
- ▶ 8mm shaft

Silver



White Translucent 1 Stop



### Specifications

Colour	A	B	C	D	Colour Temp.	Light Loss	Code
Silver/White	112cm (44")	71cm (28")	94.5cm (37")	101.6cm (40")	5600k 5450k	-0.6f (shoot through) -0.2f (silver white bounce) -0.1f (white bounce) -0.2f (silver bounce)	LL LU4537F
Silver/White	92.5cm (36½")	61cm (24")	78cm (31")	84.5cm (33")	5600k 5450k	-0.6f (shoot through) -0.2f (silver white bounce) -0.1f (white bounce) -0.2f (silver bounce)	LL LU3237F



### Umbrellas - Essentials



LL LU3212F / LL LU4512F Bounce PVC



LL LU2123 / LL LU3707F / LL LU4507F White Translucent



LL LU4503F Silver Bounce

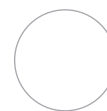
#### Features

- ▶ White translucent shoot through
- ▶ Silver bounce
- ▶ White PVC bounce
- ▶ Extra large white bounce
- ▶ Available in various sizes
- ▶ 8mm shaft

#### Specifications

Style	Colour	A	B	C	D	Colour Temp.	Light Loss	Code
Translucent	White	66cm (26")	43cm (17")	53cm (20")	58cm (23")	5450k	-0.9f	LL LU2123
Translucent	White	92.5cm (36½")	61cm (24")	78cm (31")	84.5cm (33")	5450k	-0.9f	LL LU3207F
Translucent	White	112cm (44")	71cm (28")	94.5cm (37")	101.6cm (40")	5450k	-0.7f	LL LU4507F
Bounce	Silver	92.5cm (36½")	61cm (24")	78cm (31")	84.5cm (33")	5600k	-0.18f	LL LU3203F
Bounce	Silver	112cm (44")	71cm (28")	94.5cm (37")	101.6cm (40")	5600k	-0.2f	LL LU4503F
Bounce PVC	White	92.5cm (36½")	61cm (24")	78cm (31")	84.5cm (33")	5450k	-0.9f	LL LU3212F
Bounce PVC	White	112cm (44")	71cm (28")	94.5cm (37")	101.6cm (40")	5450k	-0.7f	LL LU4512F
Jumbo Bounce	White	190cm (75")	117cm (46")	154cm (61")	160cm (63")	5600k	-0.8f	LL LU5821
Jumbo Bounce	White	244cm (96")	150cm (59")	180cm (71")	186cm (73")	5600k	-0.8f	LL LU7921

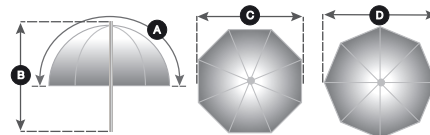
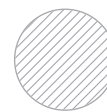
White



Silver

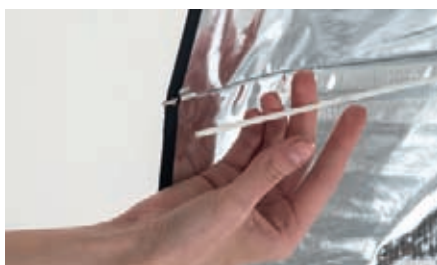


White Translucent 1 Stop



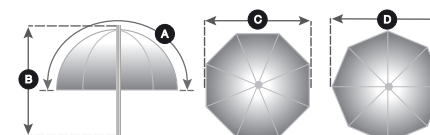
### Mega Umbrellas

The Mega umbrella is our largest umbrella featuring a removable cover. There are two models available, the first is a white translucent shoot through which creates a shallow parabolic for maximum spread and the second is a silver reflective surface which creates a deeper parabolic for a more focused spread of light. Each umbrella features a white fibreglass framework with an 8mm shaft diameter. The umbrella is also available as a kit which features the white shoot through and silver reflective covers.



#### Features

- ▶ Removable covers
- ▶ White fibreglass framework
- ▶ 8mm shaft
- ▶ Available as a silver bounce or translucent shoot through



#### Specifications

Mega Umbrella	A	B	C	D	Code
Mega Umbrella - Translucent	220cm (86")	91cm (35")	181cm (71")	185cm (72")	LL LU7907
Mega Umbrella - Silver Parabolic	220cm (86")	91cm (35")	157cm (61")	160cm (63")	LL LU7908
Mega Umbrella Kit (Kit includes Silver Parabolic Umbrella and 1x translucent cover)					LL LU7915

# Umbrella Box

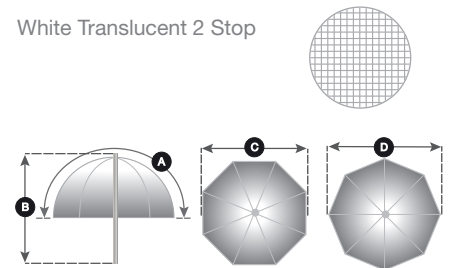
The Umbrella Box is incredibly simple to assemble, fit and use. Its unique lighting effect is achieved by first bouncing the light off the back of the Umbrella Box and then diffusing it through the coated diffuser panel. Simply insert the flash-head reflector into the Umbrella Box and close the zipped openings for a quick set up.



## Features

- ▶ Quick to set up - location or studio
- ▶ Universal fitting onto any light
- ▶ Lightweight and compact
- ▶ Available in 7mm and 8mm shaft sizes

White Translucent 2 Stop



## Specifications

Umbrella Box	A	B	C	Code
8mm shaft	112cm (44")	71cm (28")	94.5cm (37")	LL LU3226F
7mm shaft	112cm (44")	71cm (28")	94.5cm (37")	LL LU3227F

# Umbrella Kits

The umbrella kit comes in two sizes featuring either a 80cm (34") or 100cm (40") Lastolite All in One Umbrella (see page 32). The kit includes the Umbrella, 4 section stand, Hotshoe Tiltthead and padded shoulder bag. The All in One Umbrella can be used as a silver or white bounce, a silver and white bounce or shoot through.



## Features

- ▶ Truly portable solution
- ▶ All in one solution
- ▶ Includes a padded shoulder bag



LL LU2476

## Specifications

Style	A	B	C	D	Colour Temp.	Code
Umbrella Kit with LL LS2402 Tiltthead	92.5cm (36½")	61cm (24")	78cm (31")	84.5cm (33")	5600k 5450k	LL LU2475F
Umbrella Kit with LL LS2402 Tiltthead	112cm (44")	71cm (28")	94.5cm (37")	101.6cm (40")	5600k 5450k	LL LU2476F
Umbrella Kit with LL LS2422 Tiltthead Shoe Lock	92.5cm (36½")	61cm (24")	78cm (31")	84.5cm (33")	5600k 5450k	LL LU2473F
Umbrella Kit with LL LS2422 Tiltthead Shoe Lock	112cm (44")	71cm (28")	94.5cm (37")	101.6cm (40")	5600k 5450k	LL LU2474F



LL LS2422



LL LS2402



## Lighting Control

### Cubelite®

The Cubelite® allows the photographer to control the lighting of products, minimizing shadows and isolating the subject from the background.

It's never been easier to take quick and crisp product shots on location or in the studio. The Cubelite® has been enhanced in a number of ways so as to improve its utility:

- Background clips mounted in the roof for additional height.
- Open base for even floor surface, easier to fold, and enables positioning of cube over immovable items e.g. plants
- Front opens to edge of Cubelite® for wider viewing angles.

The Cubelite® offers a true location studio which instantly pops open ready for work.

#### Features

- ▶ Ideal for product shots
- ▶ Shadowless lighting
- ▶ Perfect for digital or film use
- ▶ Isolates subject
- ▶ Collapses to a third of its original size



#### Specifications

Cubelite®	Size	Code
Cubelite	45cm (18")	LL LR1886
Cubelite	58cm (2')	LL LR2486
Cubelite	90cm (3')	LL LR3686
Cubelite with removable back	90cm (3')	LL LR3687
Cubelite	120cm (4')	LL LR4886
Cubelite	1.5m x 1.5m x 2.1m (5' x 5' x 7')	LL LR5287
Cubelite	2m x 2m x 2.1m (6'6" x 6'6" x 7')	LL LR6687

# Cubelite® Kits

The Cubelite® Kit contains everything you need to take professional photographs with controlled shadows - just add your digital camera! The Cubelite® kit now includes a lighting guide by Michael Freeman.



Fluorescent Light

## Features

- ▶ Kits have all you need to take professional product photographs
- ▶ Just add your digital camera!
- ▶ Available in 5 different sizes
- ▶ Available with tungsten or fluorescent lighting



Tungsten Light



## Specifications

Cubelite® Kit Tungsten	Cubelite®	Light stand	Tungsten Light	500w Bulb	Fluorescent Light	85w Bulb	Silver / White Reflector	White Vinyl Background	White Background Paper (11m roll)	lighting guide	Code
58cm (2') Kit	1	1	1	1	-	-	1	1	-	1	LL LR3611
90cm (3') Kit	1	1	1	1	-	-	1	1	-	1	LL LR3601
90cm (3') Kit with removable back	1	1	1	1	-	-	1	1	-	1	LL LR3612
120cm (4') Kit	1	1	1	1	-	-	1	1	-	1	LL LR3613
1.5m x 1.5m x 2.1m (5' x 5' x 7') Kit	1	4	4	4	-	-	-	-	1	1	LL LR3615
2m x 2m x 2.1m (6'6" x 6'6" x 7') Kit	1	4	4	4	-	-	-	-	1	1	LL LR3614
Cubelite® Kit Fluorescent	Cubelite®	Light stand	Tungsten Light	500w Bulb	Fluorescent Light	85w Bulb	Silver / White Reflector	White Vinyl Background	White Background Paper (11m roll)	lighting guide	Code
58cm (2') Kit	1	1	-	-	1	1	1	1	-	1	LL LR3661
90cm (3') Kit	1	1	-	-	1	1	1	1	-	1	LL LR3662
120cm (4') Kit	1	1	-	-	1	1	1	1	-	1	LL LR3663
1.5m x 1.5m x 2.1m (5' x 5' x 7') Kit	1	4	-	-	4	4	-	-	1	1	LL LR3664
2m x 2m x 2.1m (6'6" x 6'6" x 7') Kit	1	4	-	-	4	4	-	-	1	1	LL LR3665

### Studio Cubelite® PATENTED

The Studio Cubelite® is the ultimate solution for product photography and takes our highly successful Cubelite® concept even further. It allows for control of the light from below and all other directions allowing the photographer to give products that floating look with no shadows if desired. The tensioned diffuser fabric means the reflections on even the most reflective surface are kept to an absolute minimum, whilst the generous front opening can be closed to mask reflections from the camera/operator as well. The patented design also allows you to control the light from underneath by pointing the source up or down into the base unit giving different light distribution effects and creating graduated backgrounds if required.

#### Features

- ▶ 360 degree lighting
- ▶ Full shadow control
- ▶ Reflection control
- ▶ Collapses flat in minutes with simple tensioning rods
- ▶ Features a unique base diffusion system
- ▶ Includes a diffused film to create the translucent background
- ▶ Includes an acrylic top surface for heavier items up to 8kg
- ▶ Minimum room height required for the 100cm Studio Cubelite® kit is 240cm (7'8")



#### Specifications

Studio Cubelite®	Size	Code
Studio Cubelite®	70cm x 70cm x 155cm (28" x 28" x 61")	LL LR8824
Studio Cubelite®	100cm x 100cm x 185cm (39" x 39" x 73")	LL LR8836

#### Specifications

Studio Cubelite® Accessories	Code
Replacement translucent film for the 8824	LL LR8831
Replacement translucent film for the 8836	LL LR8834

#### Specifications

Studio Cubelite® kit Tungsten	Studio Cubelite®	Tungsten Light	500w Bulb	Fluorescent Light	85w Bulb	Reflector For Light	Light Stand	Backlight Light Stand	Softbox	Code
70cm (28") Studio Cubelite® Kit	1	2	2	-	-	2	1	1	1	LL LR8825
100cm (39") Studio Cubelite® Kit	1	2	2	-	-	2	1	1	1	LL LR8837
Studio Cubelite® kit Fluorescent	Studio Cubelite®	Tungsten Light	500w Bulb	Fluorescent Light	85w Bulb	Reflector For Light	Light Stand	Backlight Light Stand	Softbox	Code
70cm (28") Studio Cubelite® Kit	1	-	-	2	2	2	1	1	1	LL LR8828
100cm (39") Studio Cubelite® Kit	1	-	-	2	2	2	1	1	1	LL LR8840



# LiteTable PATENTED

The Lastolite still life table "LiteTable" will revolutionize your product photography with its ease of use and light control. It can be assembled in minutes (without the use of any screws, bolts or allen keys!) and folds flat into a handy carry case when not in use, making it ideal for occasional use and location work. The unique patented design allows the photographer to control the light distribution underneath the table by positioning the light in different ways, creating graduated backgrounds or a completely even tone. With gels the creative possibilities are endless. Many of these techniques have previously been difficult with conventional light tables as they have open sides underneath.



With illuminated LiteTable base



Without illuminated LiteTable base

## Features

- ▶ Available in two sizes
- ▶ Includes an acrylic top surface for heavier items up to 8kg
- ▶ Includes a translucent background Film to create an infinity curve

## Specifications

LiteTable	Size	Code
LiteTable	70cm x 70cm x 150cm (28" x 28" x 60")	LL LR7824
LiteTable	100cm x 100cm x 180cm (39" x 39" x 72")	LL LR7836
LiteTable Accessories		Code
Replacement translucent film for the LL LR7824		LL LR8830
Replacement translucent film for the LL LR7836		LL LR8833



# ePhotomaker

The ePhotomaker has been designed for eBay and other online auction users looking to improve their images. Having well-lit photos with accurate colours can make the difference between selling or not selling a product. The ePhotomaker features a diffusing fabric on one side to soften the light and a reflector to fill in the shadows on the other side. All you need to provide is an ordinary domestic desk lamp. The ePhotomaker kit includes an EzyBalance grey card to control colours and exposure resulting in photographs with crisp white backgrounds. The kit also includes a tabletop tripod.



## Features

- ▶ Ideal for selling products on the web
- ▶ Supplied with a blue gel to simulate daylight lighting conditions
- ▶ Collapsible - easy to store
- ▶ Built in reflector on one side, diffuser on the other side
- ▶ Kit contains ePhotomaker, EzyBalance, Blue daylight gel, clips and Tripod

## Specifications

ePhotomaker	Code
ePhotomaker Small Kit	LL LR2484
ePhotomaker Small Kit (Black interior)	LL LR2482
ePhotomaker Large Kit	LL LR3684

- ePhotomaker kit contains:
- ePhotomaker
  - EzyBalance 'Point and Shoot' (grey surface only)
  - Tabletop tripod
  - Blue daylight gel with clips

### Dyed Background Swatches

The washable pallet of colours is available in a number of different formats:

- Sheet/Curtain (knitted) 3m x 3.5 m (10' x 12') or 3m x 7m (10' x 24')
- Collapsible reversible 1.5m x 1.8m (5' x 6')



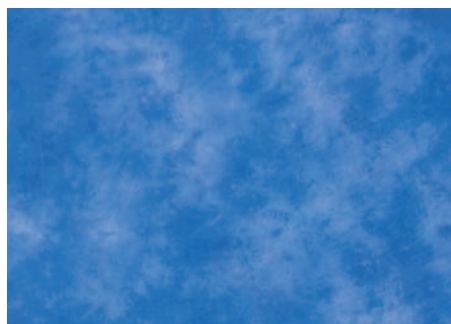
51 Ohio\*



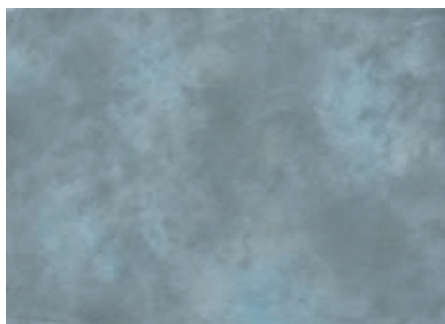
48 Maine



49 Colorado\*



46 Florida



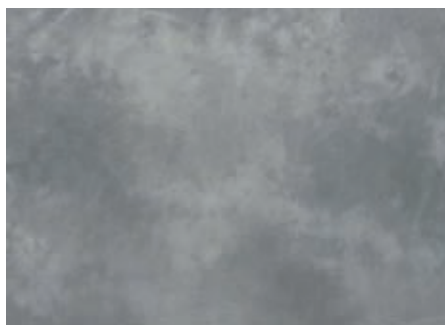
50 Wyoming\*



53 Mississippi



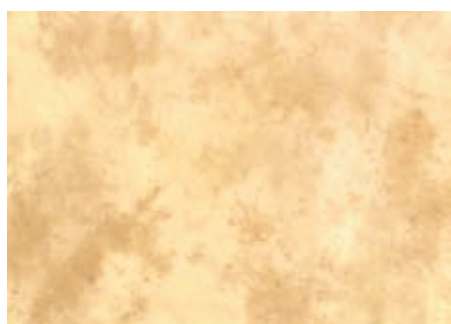
41 Dakota\*



40 Washington\*



55 New York\*



54 Arizona\*



42 Kentucky



43 Virginia\*

\* Re-blended for a subtler less contrasting finish.

# Dyed Knitted Ezycare Backgrounds

The dyed knitted Ezycare curtain backgrounds come in six popular colours and are made from a knitted fabric which can be draped or stretched to instantly remove any creases. Fully machine washable at 40°C (105°F) in a large washing machine, these backgrounds are available in two sizes 3m x 3.5m and 3m x 7m. Each background is supplied in a handy tote bag and features a hem on the 3m edge to insert a pole for support. A set of 4 clips are included to secure the background when stretched between the stands of a support system. Two sand bags are also included to secure the floor section of the background.

## Features

- ▶ Available in 3m x 3.5m (10' x 12') and 3m x 7m (10' x 24')
- ▶ Six colours
- ▶ Creases can be removed by stretching the fabric
- ▶ Support systems available



## Specifications

Dyed Knitted Ezycare Backgrounds	Size: 3m x 3.5m (10' x 12') Code	Size: 3m x 7m (10' x 24') Code
Washington	LL LB7540	LL LB7640
Dakota	LL LB7541	LL LB7641
Florida	LL LB7546	LL LB7646
Maine	LL LB7548	LL LB7648
Wyoming	LL LB7550	LL LB7650
Arizona	LL LB7554	LL LB7654





### Dyed Collapsible Reversible Backgrounds

This extensive range of collapsible backgrounds gives photographers the colours and patterns to express their creativity.

#### Features

- ▶ Crease resistant fabric
- ▶ The ultimate location accessory
- ▶ Collapses to a third of its original size
- ▶ Ideal for portraits on location or in the studio
- ▶ Can be used for solo portraits or smaller groups
- ▶ Zip up bag
- ▶ Reversible
- ▶ Combine with Lastolite's background support system LL LB1109/LL LB1116 on page 64



#### Specifications

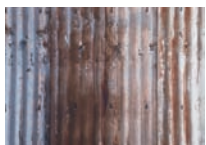
##### Dyed Collapsible Reversible Backgrounds

	Size	Code
Florida / Maine	1.5m x 1.8m (5' x 6')	LL LB56FM
Washington / Dakota	1.5m x 1.8m (5' x 6')	LL LB56WD
Wyoming / Mississippi	1.5m x 1.8m (5' x 6')	LL LB56WU
Virginia / Kentucky	1.5m x 1.8m (5' x 6')	LL LB56VK
New York / Ohio	1.5m x 1.8m (5' x 6')	LL LB56NO
Arizona / Colorado	1.5m x 1.8m (5' x 6')	LL LB56CA

# Urban Collapsible Backgrounds



Red Brick



Corrugated



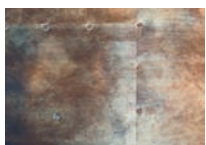
Rusty Metal



Distressed Paper



Grey Stone



Metal

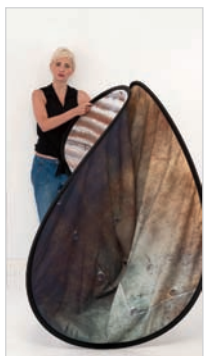


Plaster Wall



Graffiti

The urban collapsible backgrounds allow you to create the outdoor look in an instant whether you're in the studio or a client's home. Each double sided background has unique urban feel and can quickly add a new dimensions to your portrait sittings. No longer will you have to find locations or be controlled by the weather.



## Features

- ▶ 8 different surfaces
- ▶ Reversible
- ▶ Create the location effect anywhere
- ▶ Collapsible to a third of its original size

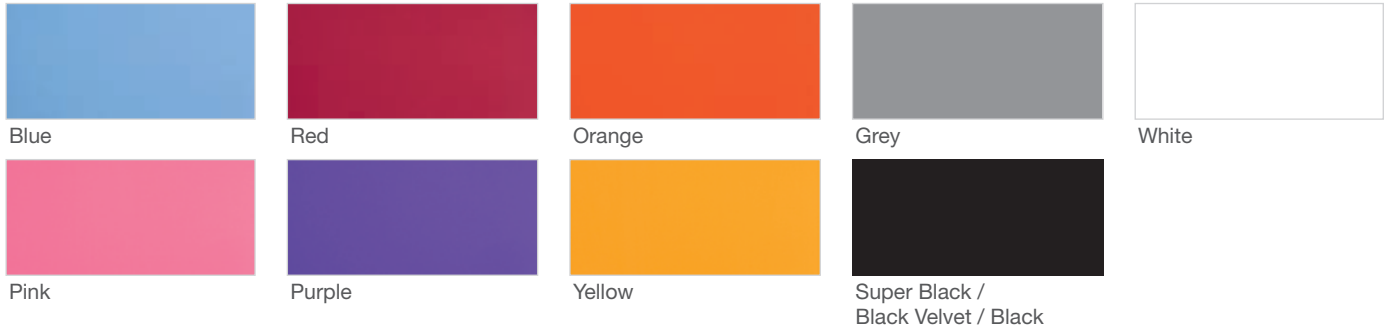
## Specifications

Urban Collapsible Backgrounds		
	Size	Code
Red Brick / Grey Stone	1.5m x 2.1m (5' x 7')	LL LB5711
Corrugated / Metal	1.5m x 2.1m (5' x 7')	LL LB5712
Rusty Metal / Plaster Wall	1.5m x 2.1m (5' x 7')	LL LB5713
Distressed Paper / Graffiti	1.5m x 2.1m (5' x 7')	LL LB5714



## Backgrounds

### Plain Background Swatches



### Plain Collapsible Backgrounds

A range of collapsible, reversible, plain coloured backgrounds. In addition to the standard black, white and grey we now have a range of punchy vibrant colours for a more modern look to you portraits.

A simple solution for flat plain coloured backgrounds, a great way to get the seamless paper effect but in a collapsible portable format!

#### Features

- ▶ Crease resistant
- ▶ Single colours
- ▶ Reversible
- ▶ Collapsible
- ▶ Ideal for passport, ID and corporate photos



Specifications		
Plain Collapsible Backgrounds	Size	Code
Blue / Pink	1.8m x 2.15m (6' x 7')	LL LB6751
Red / Purple	1.8m x 2.15m (6' x 7')	LL LB6752
Yellow / Orange	1.8m x 2.15m (6' x 7')	LL LB6753
Black Velvet	1.5m x 1.8m (5' x 6')	LL LB5602
Super Black with train	1.8m x 2.15m (6' x 7')	LL LB67SB
Black / White	1.5m x 1.8m (5' x 6')	LL LC5621
Black / White	1.8m x 2.15m (6' x 7')	LL LB5921
Black / White	1.8m x 2.75m (6' x 9')	LL LB6921
Black / White with train	1.8m x 2.15m (6' x 7')	LL LB6701
Black / Mid Grey	1.5m x 1.8m (5' x 6')	LL LB56GB
Black / Mid Grey	1.8m x 2.15m (6' x 7')	LL LB67GB
White	1.5m x 1.8m (5' x 6')	LL LB5620
White / Mid Grey	1.5m x 1.8m (5' x 6')	LL LB56GW
White / Mid Grey	1.8m x 2.15m (6' x 7')	LL LB67GW





# Plain Knitted EzyCare Backgrounds

Two plain colours have been added to the EzyCare crease resistant range of background curtains.

The black and white curtains are available in two sizes 3m x 3.5m (10' x 12') and 3m x 7m (10' x 24') featuring a looped hem on the 3m edge to insert a pole for support.



## Features

- ▶ Available in 3m x 3.5m (10' x 12') and 3m x 7m (10' x 24')
- ▶ Creases can be removed by stretching the fabric
- ▶ Support systems available (page 64)
- ▶ Machine washable at 40°C (105°F)

## Specifications

Plain Knitted EzyCare Backgrounds	Code
White 3m x 3.5m (10' x 12') EzyCare	LL LB7501
Black 3m x 3.5m (10' x 12') EzyCare	LL LB7502
White 3m x 7m (10' x 24') EzyCare	LL LB7601
Black 3m x 7m (10' x 24') EzyCare	LL LB7602



## Backgrounds

### HiLite Backgrounds PATENTED

The HiLite backgrounds range allows the photographer to work in a way that was extremely difficult to achieve in the past, 'high key' photography on location and in restrictive spaces. By rear lighting the white background itself there is no longer a need to use a background light behind the subject. Furthermore, because the background is actually illuminated it means the subject can stand virtually right in front of it without casting a shadow. The HiLite backgrounds also works as a large rear softbox and illuminates the subject as well, meaning you can use just one other flash head to light the subject from the front. What's more, the whole thing is collapsible.

#### Features

- ▶ Available in four sizes 1.4m x 1m (4'6" x 3'6"), 1.5m x 2.15m (5' x 7'), 1.8m x 2.15m (6' x 7') and 2.5m x 2.15m (8' x 7')
- ▶ Can be rotated and used on its short or long edge
- ▶ An optional 'wipe clean' vinyl train is also available that attaches to either edge for full length work
- ▶ Can be suspended on our 1108 background support system
- ▶ Can even be used as a very large softbox
- ▶ Free standing



#### Specifications

HiLite Background	Code
HiLite 1.4m x 1m (4'6" x 3'6")	LL LB8990
HiLite 1.5m x 2.15m (5' x 7')	LL LB8857
HiLite 1.8m x 2.15m (6' x 7')	LL LB8867
HiLite 2.5m x 2.15m (8' x 7')	LL LB8878
Cleanable Vinyl Train	Code
For the 1.5m x 2.15m (5' x 7') HiLite	LL LB8858
For the 1.8m x 2.15m (6' x 7') HiLite	LL LB8868
For the 2.5m x 2.15m (8' x 7') HiLite	LL LB8879



LL LB8878



LL LB8990



## HiLite Bottletops

The bottle top background covers with a train now make the HiLite product range even more versatile. These backgrounds stretch over the HiLite and allow the photographer to quickly switch from a high key to a low or mid key environment. When using the covers the HiLite should not be illuminated from the rear.



Super Black



Grey



ChromaKey Blue



ChromaKey Green



### Features

- ▶ Switch from high key to mid or low key in an instant
- ▶ Designed to fit the 1.5m x 2.15m (5' x 7') and 1.8m x 2.15m (6' x 7') HiLites
- ▶ Available in four colours

### Specifications

HiLite Bottletops	Code
Super Black 1.5m x 2.15m (5' x 7')	LL LB8703
Grey 1.5m x 2.15m (5' x 7')	LL LB8770
ChromaKey Blue 1.5m x 2.15m (5' x 7')	LL LB8788
ChromaKey Green 1.5m x 2.15m (5' x 7')	LL LB8781
Super Black 1.8m x 2.15m (6' x 7')	LL LB8803
Grey 1.8m x 2.15m (6' x 7')	LL LB8870
ChromaKey Blue 1.8m x 2.15m (6' x 7')	LL LB8888
ChromaKey Green 1.8m x 2.15m (6' x 7')	LL LB8881



### Panoramic Background

The Panoramic background is one of our widest, crease free textile surfaces. It features a collapsible three panel aluminium framework, creating a useful self-supporting wraparound structure. The fabric cover clips to the framework and is available in three colours – Black, Chromakey Green and White. The Panoramic background is ideal for shooting larger groups on location, perfect for weddings, prom nights and event photography. The background folds down neatly into its own case and fits easily into a car.

#### Features

- ▶ 2.3m high and up to 4m wide
- ▶ Self-supporting
- ▶ Weighs only 9kg and packs into a 1m x .3m x .35m bag
- ▶ Single person assembly

#### Specifications

Panoramic Background	Code
Panoramic 4m (13') Background - Black	LL LB7621
Panoramic 4m (13') Background - Green	LL LB7622
Panoramic 4m (13') Background - White	LL LB7623
Panoramic 4m (13') Background Cover - Black	LL LB7625
Panoramic 4m (13') Background Cover - Green	LL LB7626
Panoramic 4m (13') Background Cover - White	LL LB7627



# Superwhite Vinyl Backgrounds

Lastolite's 'wipe clean' Superwhite vinyl background can literally be used over and over again. Simply wipe away any dirt or footprints at the end of your shoot, then roll it back up ready for next time! It couldn't be easier. Supplied on a roll the same width as our standard paper backgrounds (2.75m) the Superwhite vinyl can easily be suspended using our LL LB1128 background support system, while the 3.7m can be suspended using the 4m Solo Background Support (LL LB1142).

Note: Not compatible with the Manfrotto Expan Drive System



## Features

- ▶ Wipe clean
- ▶ Long lasting
- ▶ Ideal for 'high key' photography'
- ▶ 2.75m x 6m (9' x 20') and 3.7m x 6m (12' x 20')

## Specifications

Superwhite Vinyl Background	Code
Superwhite Vinyl Background 2.75m x 6m	LL LB7761
Superwhite Vinyl Background 3.7m x 6m	LL LB7762

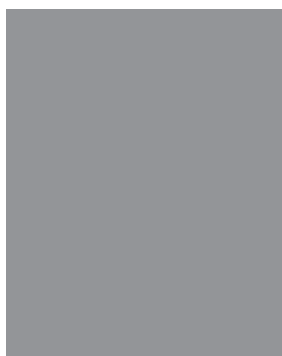


# Coloured Vinyl Backgrounds

The vinyl backgrounds are also available in three colours.



LL LB7765



LL LB7770



LL LB7781

## Features

- ▶ Available in 3 colours
- ▶ 2.75m x 6m (9' x 20')
- ▶ Wipe clean
- ▶ Long lasting

## Specifications

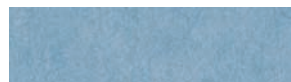
Coloured Vinyl backgrounds	Code
Black Vinyl Background	LL LB7765
Grey Vinyl Background	LL LB7770
ChromaKey Green Vinyl Background	LL LB7781

## Backgrounds

### Paper Roll Backgrounds



LL LP9001 / LP9101 / LP9201 S White



LL LP9002 Heaven



LL LP9004 Corn



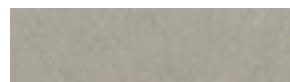
LL LP9005 Navy



LL LP9006 Wine



LL LP9008 Red



LL LP9012 Arctic Grey



LL LP9013 Nugget



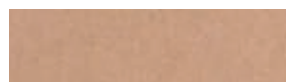
LL LP9016 Conker



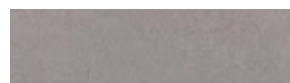
LL LP9020 / LL LP9120 / LL LP9220 Black



LL LP9024 Marigold



LL LP9025 Sandstone



LL LP9026 Flint



LL LP9027 / LL LP9127 Shadow Grey



LL LP9029 Amethyst



LL LP9030 Ocean



LL LP9031 Kingfisher



LL LP9035 Green Grass



LL LP9037 Gala Pink



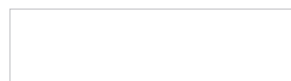
LL LP9038 Primrose



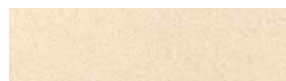
LL LP9046 Leaf Green



LL LP9047 Aztec



LL LP9050 White



LL LP9051 Ivory



LL LP9054 Graphite



LL LP9058 Royal



LL LP9060 Pewter



LL LP9062 Purple



LL LP9065 Regal Blue



LL LP9071 Yellow



LL LP9073 Chromakey Green

#### Features

- ▶ Support systems available
- ▶ Available in 3 sizes
- ▶ Comprehensive range of colours
- ▶ Totally crease free
- ▶ Disposable if marked
- ▶ Cut your own custom lengths

#### Specifications

Paper Roll Backgrounds	
Size: 2.75m x 11m (9' x 35')	Code
Super White	LL LP9001
Heaven	LL LP9002
Corn	LL LP9004
Navy	LL LP9005
Wine	LL LP9006
Red	LL LP9008
Arctic Grey	LL LP9012
Nugget	LL LP9013
Conker	LL LP9016
Black	LL LP9020
Marigold	LL LP9024
Sandstone	LL LP9025
Flint	LL LP9026
Shadow Grey	LL LP9027
Amethyst	LL LP9029
Ocean	LL LP9030
Kingfisher	LL LP9031
Green Grass	LL LP9035
Gala Pink	LL LP9037
Primrose	LL LP9038
Leaf Green	LL LP9046
Aztec	LL LP9047
White	LL LP9050
Ivory	LL LP9051
Graphite	LL LP9054
Royal	LL LP9058
Pewter	LL LP9060
Purple	LL LP9062
Regal Blue	LL LP9065
Yellow	LL LP9071
Chromakey Green	LL LP9073
Size: 1.37m x 11m (4½' x 35')	Code
Super White	LL LP9101
Black	LL LP9120
Shadow Grey	LL LP9127
Size: 3.56m x 30m (11½' x 100')	Code
Super White	LL LP9201
Black	LL LP9220



# Solo Background Support PATENT PENDING

The Solo background support features a unique pivoting cross bar which makes raising the background on the supports a much easier and safer operation. Rather than step by step adjustments at each end of the support system the new pivoting connectors allow for much greater steps without making the whole structure unstable and unmanageable. The support is available as a 3m wide or 4m wide solution. The 4m version can also be extended to 6m to accommodate wider textile backgrounds and features our heavy duty stands which allow the use of our wide width vinyl (page 61). Each kit comes in a handy carry case which fits easily into a car.



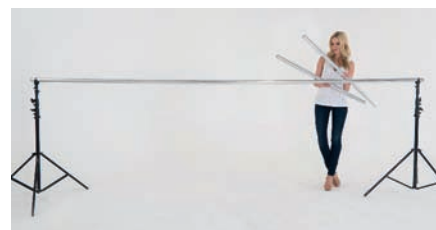
## Features

- ▶ Single user operation
- ▶ Unique pivoting cross bar
- ▶ 3m, 4m and 6m widths
- ▶ Pivoting Solo Support Brackets are available separately in sets of two

## Specifications

Solo Background Support	Code
Solo Background Support 3m (10')	LL LB1105
Solo Background Support 4m (13') Heavy Duty	LL LB1142
Solo Background Support Extension* 2m (6.5')	LL LB1143
Solo Support Bracket (Set of two)	LL LB1106

\*For 4m Background Support only



Solo Support Bracket (set of 2) LL LB1106

### Background Supports

There are a number of background supports systems to accommodate curtain, collapsible and roll up backgrounds.



LL LA1108



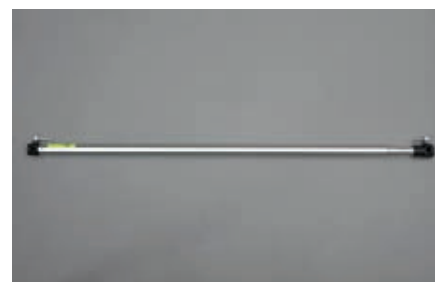
LL LA1128



LL LA1116



LL LA1109



LL LA1119

#### Specifications

Background supports	Code
Support for 3m (10') wide curtain and roll up backgrounds (metal collars)	LL LA1108
Heavy duty support for paper and vinyl roll up backgrounds (metal collars)	LL LB1128
Telescopic cross bar	LL LB1119
Stand for up to 1.5m x 1.8m (5' x 6') collapsible backgrounds	LL LB1109
5 piece stand for up to 1.8m x 2.1m (6' x 7') collapsible backgrounds	LL LB1116

# Stands

There are a number of different lighting and support stands available.



LL LS1160 (left) LL LS1158 (right)



LL LS1159



LL LS1153



LL LS1151



LL LS1592

## Specifications

Stands	Code
4 section standard lighting stand with plastic collars - Collapsible height: 84cm, Minimum height: 99cm, Maximum height: 310cm, Spread: 120cm, Loading capacity: 2.5KG, Net Weight: 1.25Kg, Maximum loading capacity (when each section is shortened by 1 inch): 4Kg	LL LS1158
4 section air cushioned lighting stand with metal collars - Collapsible height: 84cm, Minimum height: 99cm, Maximum height: 298cm, Spread: 120cm, Loading capacity: 3KG, Net Weight: 1.33Kg, Maximum loading capacity (when each section is shortened by 1 inch): 5Kg	LL LS1159
4 section heavy duty air cushioned lighting stand with metal collars (extends from 104cm to 352cm high)	LL LS1160
Backlight base	LL LS1151
Backlight base and riser set	LL LS1153
Sand Bag	LL LB1592

# Brackets and Extending Handles



LL LS2408  
Horizontal camera position



LL LS2408  
Vertical camera position



LL LS2453



LL LS2400 & LL LS2401



LL LS2452

## Specifications

Brackets and Extending Handles	Code
Camera Bracket	LL LA2408
Extending Handle (24cm - 48cm)	LL LS2400
Non Rotating Extending Handle (70cm - 176cm)*	LL LS2452
Non Rotating Extending Handle (74cm - 232cm)*	LL LS2453
Waist Holder for Extending Handles 2413 and 2435	LL LS2499
Small Handle (15cm) with Spigot and Hotshoe Connector	LL LS2437

\*Includes Waist Holder LL LS2499



## Posing Tubs



### Features

- ▶ Variety of sizes
- ▶ Nestable 'Russian Doll' style for easy storage
- ▶ Hard wearing nylon covers with padded seats
- ▶ Includes a carry case with shoulder strap

### Specifications

Posing Tubs	Code
Posing Tubs	LL LA8014

## Low Level Posing Tubs



White Covers (LL LA8011) not included

### Features

- ▶ Use with standard range of tubs (LL LA8014) for greater versatility
- ▶ White & Chromakey Green covers available
- ▶ Great for small adjustments to head heights or foot rests
- ▶ Nestable 'Russian doll' style for easy storage

### Specifications

Low Level Posing Tubs	Code
Low Level Posing Tubs	LL LA8010

## Posing Tub Covers



### Features

- ▶ White or Chromakey Green
- ▶ Washable
- ▶ Simple slide on 'sock' design

### Specifications

Posing Tub Covers	Code
White Posing Tub Covers (For LL LA8014)	LL LA8015
Chromakey Green Posing Tub Covers (For LL LA8014)	LL LA8019
White Low Level Posing Tub Covers (For LL LA8010)	LL LA8011
Chromakey Green Low Level Posing Tub Covers (For LL LA8010)	LL LA8012

# Baby Poser

The baby poser is a range of bead filled cushions designed to support a baby securely during the shoot. The cushions can be configured in different ways to pose babies of all ages comfortably on their back or front, kneeling or standing. When the cushions are positioned how you want them, fabric can be placed over the cushions to create the background colour of your choice. Each cushions is covered with a waterproof fabric in case of any little accidents!



## Features

- ▶ Multi position
- ▶ Waterproof covering
- ▶ Supports babies of all ages

## Specifications

Baby Poser	Code
Baby Poser	LL LA8017



# Baby Posing Coat

The Baby Posing coat is a unique cloak design (with hood) which allows the parent to become part of the background and maintain contact with their child throughout the shoot. This significantly reduces the child's stress and anxiety, which can often prevent the shoot from running smoothly. The parent is also able to manipulate the child into positions not achievable with traditional posing devices providing a much greater variety of poses. The coat is made from a soft velour style light absorbing fabric which ensures a stunning deep black background.



## Features

- ▶ Maintain contact with child
- ▶ Reduce child's stress and anxiety
- ▶ Greater range of poses
- ▶ Light absorbing velour fabric

## Specifications

Baby Posing Coats	Code
Baby Posing Coat Black	LL LB8020

### Chromakey Collapsible Reversibles

Chromakey has been used in film and cinema production as a tool to mix two or more images together in all aspects of the art. It is increasingly used in digital photography to cut and paste a subject onto a background.



#### Features

- ▶ Reversible
- ▶ Chromakey rim tape as standard
- ▶ Crease resistant fabric
- ▶ Fast to set up and dismantle
- ▶ For inside and outside use
- ▶ Collapses to a third of its original size
- ▶ Certified fire proof fabric

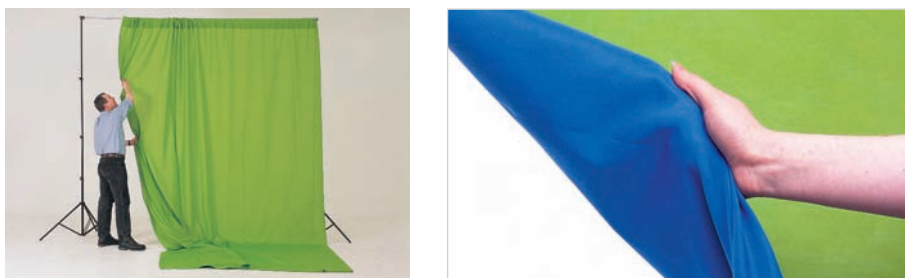
#### Specifications

Chromakey Collapsible Background	Size	Code
Chromakey Blue/ Green Reversible	150cm x 180cm (5' x 6')	LL LC5687
	180cm x 210cm (6' x 7')	LL LC5987
Black/White Reversible	150cm x 180cm (5' x 6')	LL LC5621
	180cm x 215cm (6' x 7')	LL LB5921
	180cm x 275cm (6' x 9')	LL LB6921
Green Chromakey	180cm x 210cm (6' x 7')	LL LC5981
	180cm x 275cm (6' x 9')	LL LC6981
Blue Chromakey	180cm x 210cm (6' x 7')	LL LC5988
	180cm x 275cm (6' x 9')	LL LC6988



### Chromakey Curtain / Muslin Backgrounds

Lastolite's Chromakey Curtains are available in two sizes, 3m x 3.5m (10' x 12'') and 3m x 7m (10' x 24''). Choose from Blue, Green or reversible Blue/Green versions. For most effective use, mount with Lastolite's background support system (see page 63 & 64).



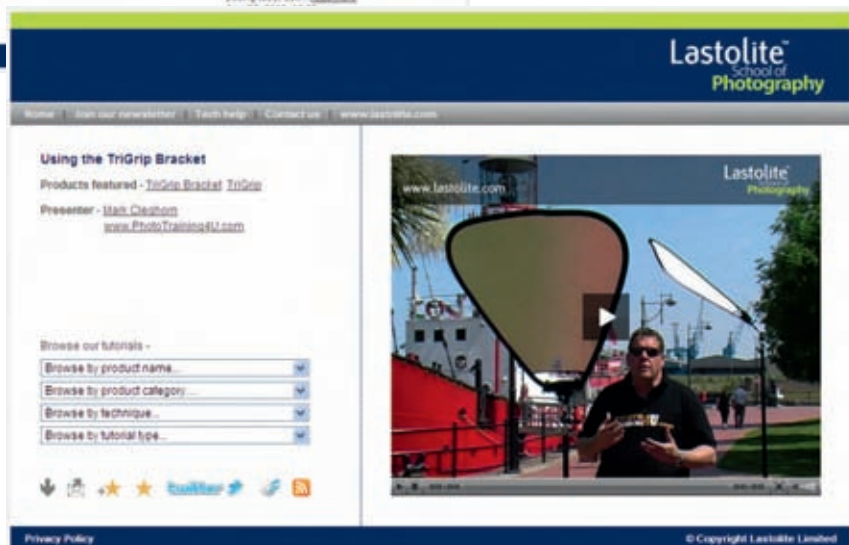
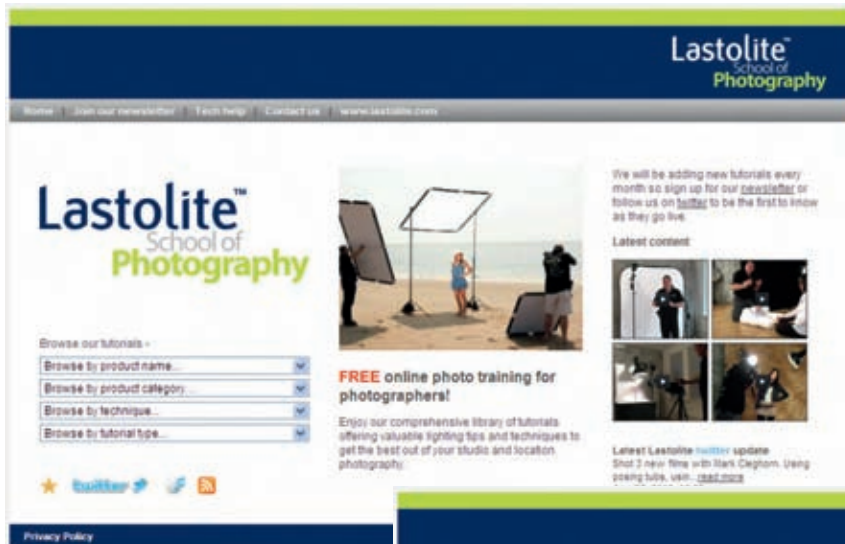
#### Specifications

Chromakey Curtains	Size	Code
Green	3 x 3.5m (10' x 12')	LL LC5781
	3 x 7m (10' x 24')	LL LC5881
Blue	3 x 3.5m (10' x 12')	LL LC5788
	3 x 7m (10' x 24')	LL LC5888
Reversible Blue / Green	3 x 3.5m (10' x 12')	LL LC5787
	3 x 7m (10' x 24')	LL LC5887



# Lastolite™ School of Photography

Visit [www.lastoliteschoolofphotography.com](http://www.lastoliteschoolofphotography.com) to view our video tutorials, which show how professional photographers use our products.



Like us on Facebook at  
[www.facebook.com/lastoliteprofessional](http://www.facebook.com/lastoliteprofessional)



Follow us on Twitter at  
[www.twitter.com/lastolite](http://www.twitter.com/lastolite)

COUNTRY	COMPANY	TELEPHONE NUMBER	WEB SITE
Argentina	Bey Corporation SRL	011 4777 6803	www.bey.com.ar
Australia	Kayell Australia Pty Ltd	1300 529 335	www.kayellaustralia.com.au
Austria	Photon HandelsgesmbH	07272 / 75797-0	www.foto-mueller.at
Belgium	Servix & Partners	03 887 77 20	www.servix.be
Bulgaria	Dynaphos	02 971 9575	www.dynaphos.com
Canada	Vistek Ltd	416-365-1777	www.vistek.ca
Chile	Matrix LTDA	02 7572930	www.matrixltda.cl
China	Manfrotto Distribution Shanghai	86 21 62360808	www.manfrottodistribution.cn
Croatia	Prizma d.o.o.	01 3895 127	www.prizma-foto.hr
Cyprus	F.C Trading Co. Ltd	22670806	www.foto-cine.com
Czech Republic	Light Q s.r.o.	224 253 079	www.lightq.cz
Denmark	OBT ApS	3879 7562	www.obt.dk
Egypt	International Trading Transworld	275 487 02	www.hensel-egypt.com
Estonia	Proffoto OÜ	5333 8112	www.proffoto.ee
Finland	Color-Kolmio Oy	020 7530 359	www.colorkolmio.fi
France	Manfrotto Distribution France - Prophot s.a.s	33 1 78 12 07 79 33 1 81 720 103	www.manfrotto.fr www.prophot.com
Georgia	Zakhar LLC	32 35-56-50	www.zakhar.ge
Germany	Manfrotto Distribution GmbH	02203 93960	www.lastolite.de
Greece	H. Alexandrou & Co.	21 0723 6847	www.lastolite.gr
Hong Kong	Manfrotto Distribution HK	852 23276728	www.manfrottodistribution.hk
Hungary	Studio Line Fototech Nika	1 222-4200	www.nika.hu
Iceland	Beco	533 3411	www.beco.is
India	Shashi Enterprises	11 2613 6872	www.shashienterprises.com
Iraq	Future Art Co Broadcasting Trading Ltd	1 8188959	www.fa-bt.com
Ireland	DML	01 465 8600	www.dml.ie
Israel	A.B.S. Altman Broadcast Services	03-7682000	www.absphoto.co.il
Italy	Manfrotto Distribution	0424 555554	www.lastolite.it
Japan	Manfrotto Distribution KK	03-5404-6871	www.lastolite.jp
Jordan	Ibrahim Ishaq Safadi & Partner	06 5678211	www.camerahouse-jo.com
Korea (south)	Saeki P & C Co., Ltd	02 3668 3137	www.saeki.co.kr
Kuwait	Ashraf & Co. Ltd	01 805151	www.ashraf.com
Latvia	SIA Master Foto Ltd	29490777	www.masterfoto.lv
Lebanon	Gulbenk Corporation	04-723777	
Lithuania	UAB Sergita	5 270 9999	www.sergita.lt
Luxembourg	Lecuit - Photo Equipment	49 56 07-1	www.lecuit.lu
Malaysia	Shriro (M) Sdn Bhd	03 7874 9842	www.shriro.com.my
Malta	The Foto Grafer	21 661380	www.thefotografer.net
Mexico	Turicia SA DE CV	55 5559 39 80	www.turicia.com
Morocco	Still Images Sarl	542 44 62 66	www.still-images.net
Netherlands	Transcontinenta BV	0252-687 555	www.transcontinenta.nl
New Zealand	Focal Holdings Ltd	09 379 5146	www.focal.co.nz
Norway	Bresson AS	99 50 13 50	www.bresson.no
Pakistan	SMI Photo Systems	021 34800035	www.smiphoto.com
Peru	Wilhelmi Monge SRL	241 4493	www.wmfoto.com
Poland	Dicam	22 631 48 78	www.dicam.pl
Portugal	Flasheffects LDA	911 501 420	www.flasheffects.pt
Qatar	Salam Studio & Stores	4444 8555	www.salams.com
Romania	Imatech Trade & Imaging SRL	021-212 08 49	www.ofertefoto.ro
Russia	OOO Sivma-Phototechnika	(495) 937 9636	www.sivma-foto.ru
Saudi Arabia	Ahmed Abdulwahed Trading Co	02 6500282	www.abdulwahed.com
Serbia	Pro Light d.o.o.	011 2774 704	www.prolightphoto.net
Singapore	Shriro (Singapore) Pte Ltd	6472 7777	www.shriroimaging.com.sg
Slovak Republic	Darian s.r.o.	0911 92 72 52	www.darian.sk
Slovenia	Cumulus d.o.o.	04 201 6533	www.cumulus.si
South Africa	Singer Photo	011 791 2208	www.singerphoto.co.za
Spain	Cromalite SL	93 436 05 61	www.cromalite.com
Sweden	Aifo AB	08-720 06 45	www.aifo.se
Switzerland	Profot AG	041 769 10 80	www.profot.ch
Taiwan	Cheng Seng Trading Co.,Ltd	02-8511-1311	www.chengseng.com.tw
Thailand	Shriro Marketing (Thailand) Limited	02 792-5000x3113	www.procamera.in.th
Turkey	Zoom Ithalat	(212) 269 76 76	www.zoomithalat.com
UAE	Salam Studio & Stores	04 704 8484	www.salams.com
UK	Manfrotto Lighting Limited	01530 832570	www.lastolite.com
Ukraine	PROPHOTO Ltd	044 502-51-51	www.prophoto.ua
USA	Manfrotto Distribution	(201) 818-9500	www.lastolite.us

## Video Dealers

Australia	DB Audio Visual	03 9819 3630	www.dbav.com.au
Belgium	ES Video Facilities	016 40 40 20	www.esvideo.be
Netherlands	Vocas BV	035-6233707	www.vocas.com
Russia	DNK Corporation	495 232 3828	www.dnk.ru
Syria	Ghali Electronics	11 333 54 51	www.ghali-electronics.com